

CISATRACURIUM BESYLATE INJECTION

HIGHLIGHTS OF PRESCRIBING INFORMATION

These highlights do not include all the information needed to use CISATRACURIUM BESYLATE INJECTION safely and effectively. See full prescribing information for CISATRACURIUM BESYLATE INJECTION. CISATRACURIUM BESYLATE Injection for intravenous use. Initial U.S. Approval: 1995

INDICATIONS AND USAGE

Cisatracurium besylate injection, is a nondepolarizing neuromuscular blocker indicated:

- as an adjunct to general anesthesia to facilitate tracheal intubation in adults and in pediatric patients 1 month to 12 years of age (1)
- to provide skeletal muscle relaxation during surgery in adults and in pediatric patients 2 to 12 years of age as a bolus or infusion maintenance (1)
- for mechanical ventilation in the ICU in adults (1)

Limitations of Use:

Cisatracurium besylate injection, is not recommended for rapid sequence endotracheal intubation due to the time required for its onset of action

DOSAGE AND ADMINISTRATION

Store Cisatracurium besylate injection, with the cap and ferrule intact and in a manner that minimizes the possibility of selecting the wrong product (2.1)

- Administer intravenously only by or under the supervision of experienced clinicians familiar with drug's actions and possible complications (2.1)
- Use only if personnel and facilities for resuscitation and life support, and a Cisatracurium besylate injection, antagonist are immediately available (2.1)
- Use a peripheral nerve stimulator to determine adequacy of blockade (e.g., need for additional doses), minimize risk of overdosage or underdosage, assess extent of recovery from blockade, potentially limit exposure to toxic metabolites through dose titration, and facilitate more rapid reversal of Cisatracurium besylate-induced paralysis (2.1)
- See the Full Prescribing Information for:
 - Dosage and administration instructions in adults, pediatric patients, geriatric patients, patients with neuromuscular disease, burns, end-stage renal disease, and patients undergoing coronary artery bypass graft surgery with induced hypothermia (2.2, 2.3, 2.4, 2.5)
 - Continuous infusion rates (2.6)
 - Preparation instructions (2.7)
 - Drug compatibility (2.8)

DOSAGE FORMS AND STRENGTHS

- Injection:
 - 10 mg/5 mL (2 mg/mL) in single-dose vials (3)

FULL PRESCRIBING INFORMATION: CONTENTS*

1 INDICATIONS AND USAGE

2 DOSAGE AND ADMINISTRATION

- 2.1 Important Dosage and Administration Instructions
- 2.2 Recommended Cisatracurium besylate Injection, Dose for Performing Tracheal Intubation
- 2.3 Recommended Maintenance Bolus Cisatracurium besylate Injection, Doses in Adult Surgical Procedures
- 2.4 Dosage in Burn Patients
- 2.5 Dosage for Continuous Infusion
- 2.6 Rate Tables for Continuous Infusion
- 2.7 Preparation of Cisatracurium besylate injection,
- 2.8 Drug Compatibility

3 DOSAGE FORMS AND STRENGTHS

4 CONTRAINDICATIONS

5 WARNINGS AND PRECAUTIONS

- 5.1 Residual Paralysis
- 5.2 Risk of Serious Adverse Reactions in Infants due to Benzyl Alcohol Preservative in 10 mL Multiple-Dose Vials
- 5.3 Risk of Seizure
- 5.4 Hypersensitivity Reactions Including Anaphylaxis
- 5.5 Risk of Death Due to Medication Errors
- 5.6 Risks Due to Inadequate Anesthesia
- 5.7 Risk for Infection
- 5.8 Potentiation of Neuromuscular Blockade
- 5.9 Resistance to Neuromuscular Blockade with Certain Drugs
- 5.10 Malignant Hyperthermia (MH)

6 ADVERSE REACTIONS

- 6.1 Clinical Studies Experience
- 6.2 Postmarketing Experience

7 DRUG INTERACTIONS

- 7.1 Clinically Significant Drug Interactions
- 7.2 Drugs Without Clinically Significant Drug Interactions with Cisatracurium besylate

FULL PRESCRIBING INFORMATION

1 INDICATIONS AND USAGE

Cisatracurium besylate injection, is indicated:

- as an adjunct to general anesthesia to facilitate tracheal intubation in adults and in pediatric patients 1 month to 12 years of age
- to provide skeletal muscle relaxation in adults during surgical procedures or during mechanical ventilation in the ICU
- to provide skeletal muscle relaxation during surgical procedures via infusion in pediatric patients 2 years and older

Limitations of Use

Cisatracurium besylate injection, is not recommended for rapid sequence endotracheal intubation due to the time required for its onset of action.

2 DOSAGE AND ADMINISTRATION

2.1 Important Dosage and Administration Instructions

Risk of Medication Errors

Accidental administration of neuromuscular blocking agents may be fatal. Store Cisatracurium besylate injection, with the cap and ferrule intact and in a manner that minimizes the possibility of selecting the wrong product. [see *Warnings and Precautions* (5.5)]

Important administration instructions include:

- Cisatracurium besylate injection, is for intravenous use only.
- Administer Cisatracurium besylate injection, in carefully adjusted dosage by or under the supervision of experienced clinicians who are familiar with the drug's actions and the possible complications.
- Use Cisatracurium besylate injection, only if the following are immediately available: personnel and facilities for resuscitation and life support (tracheal intubation, artificial ventilation, oxygen therapy); and an antagonist of Cisatracurium besylate injection, [see *Overdosage* (10)].
- The dosage information which follows is intended to serve as an initial guide for individual patients; base subsequent Cisatracurium besylate injection, dosage on the patients' responses to the initial doses.
- Use a peripheral nerve stimulator to:
 - Determine the adequacy of neuromuscular blockade (e.g., need for additional Cisatracurium besylate injection, doses, reduction of the infusion rate).
 - Minimize risk of overdosage or underdosage.
 - Assess the extent of recovery from neuromuscular blockade (e.g., spontaneous recovery or recovery after administration of a reversal agent, e.g., neostigmine).
 - Appropriately titrate doses to potentially limit exposure to toxic metabolites.
 - Facilitate more rapid reversal of the Cisatracurium besylate-induced paralysis.

2.2 Recommended Cisatracurium besylate Injection, Dose for Performing Tracheal Intubation

Tracheal Intubation in Adults

Prior to selecting the initial Cisatracurium besylate injection, bolus dose, consider the desired time to tracheal intubation and the anticipated length of surgery, factors affecting time to onset of complete neuromuscular block such as age and renal function, and factors that may influence intubation conditions such as the presence of co-induction agents (e.g., fentanyl and midazolam) and the depth of anesthesia.

In conjunction with a propofol/nitrous oxide/oxygen induction-intubation technique or a thiopental/nitrous oxide/oxygen induction-intubation technique, the recommended starting weight-based dose of Cisatracurium besylate injection, is 0.15 mg/kg; however, smaller or larger maintenance doses of Cisatracurium besylate injection, and attempting intubation by at least 1 minute to achieve adequate intubation conditions in geriatric patients and patients with end-stage renal disease. A peripheral nerve stimulator should be used to determine the adequacy of muscle relaxation for the purposes of intubation and the timing and amounts of subsequent doses. [see *Use in Specific Populations* (8.5, 8.6) and *Clinical Pharmacology* (12.3)].

Tracheal Intubation in Pediatric Patients

Infants 1 to 23 Months of Age

The recommended dose of Cisatracurium besylate injection, for intubation of pediatric patients ages 1 month to 23 months is 0.15 mg/kg administered over 5 to 10 seconds. When administered during stable opioid/nitrous oxide/oxygen anesthesia, 0.15 mg/kg of Cisatracurium besylate injection, produced maximum neuromuscular blockade in about 2 minutes (range: 1.3 to 4.3 minutes) with a clinically effective block (time to 25% recovery) for about 43 minutes (range: 34 to 58 minutes). [see *Clinical Studies* (14.2)].

Pediatric Patients 2 to 12 Years of Age

The recommended weight-based bolus dose of Cisatracurium besylate injection, for pediatric patients 2 to 12 years of age is 0.1 to 0.15 mg/kg administered over 5 to 10 seconds. When administered during stable opioid/nitrous oxide/oxygen anesthesia, 0.1 mg/kg Cisatracurium besylate injection, produced maximum neuromuscular blockade in an average of 2.8 minutes (range: 1.8 to 6.7 minutes) with a clinically effective block (time to 25% recovery) for 28 minutes (range: 21 to 38 minutes). When administered during stable opioid/nitrous oxide/oxygen anesthesia, 0.15 mg/kg Cisatracurium besylate injection, produced maximum neuromuscular blockade in an average of about 3 minutes (range: 1.3 to 8 minutes) with a clinically effective block for 36 minutes (range: 29 to 46 minutes). [see *Clinical Studies* (14.2)].

2.3 Recommended Maintenance Bolus Cisatracurium besylate Injection, Doses in Adult Surgical Procedures

Determine if maintenance bolus doses are needed based on clinical criteria including the response to peripheral nerve stimulation. The recommended maintenance bolus dose of Cisatracurium besylate injection, is 0.03 mg/kg; however, smaller or larger maintenance doses may be administered based on the required duration of action. Administer the first maintenance bolus dose starting:

- 40 to 50 minutes after an initial dose of Cisatracurium besylate injection, 0.15 mg/kg;
- 50 to 60 minutes after an initial dose of Cisatracurium besylate injection, 0.2 mg/kg.

For long surgical procedures using inhalational anesthetics administered with nitrous oxide/oxygen at the 1.25 MAC level for at least 30 minutes, consider administering less frequent maintenance bolus doses or lower maintenance bolus doses of Cisatracurium besylate injection, [see *Clinical Pharmacology* (12.2)]. No adjustment to the initial Cisatracurium besylate injection, maintenance bolus dose should be necessary when Cisatracurium besylate injection, is administered shortly after initiation of volatile agents or when used in patients receiving propofol anesthesia.

2.4 Dosage in Burn Patients

Burn patients have been shown to develop resistance to nondepolarizing neuromuscular blocking agents; therefore, consider increasing the Cisatracurium besylate injection, dosages for intubation and maintenance. [see *Use in Specific Populations* (8.8)].

2.5 Dosage for Continuous Infusion

Continuous Infusion for Surgical Procedures in Adults and Pediatric Patients

During extended surgical procedures, Cisatracurium besylate injection, may be administered by continuous infusion to adults and pediatric patients aged 2 or more years if patients have spontaneous recovery after the initial Cisatracurium besylate injection, bolus dose. Following recovery from neuromuscular blockade, it may be necessary to re-administer a bolus dose to quickly re-establish neuromuscular blockade prior to starting the continuous infusion.

If patients have had recovery of neuromuscular function, the recommended initial Cisatracurium besylate injection, infusion rate is 3 mcg/kg/minute [see *Dosage and Administration* (2.6)]. Subsequently reduce the rate to 1 to 2 mcg/kg/minute to maintain continuous neuromuscular blockade. Use peripheral nerve stimulation to assess the level of neuromuscular blockade and to appropriately titrate the Cisatracurium besylate injection, infusion rate. If no response is elicited to peripheral nerve stimulation, discontinue the infusion until a response returns.

Consider reducing the infusion rate by up to 30% to 40% when Cisatracurium besylate injection, is administered during stable isoflurane anesthesia for at least 30 minutes (administered with nitrous oxide/oxygen at the 1.25 MAC level) [see *Clinical Pharmacology* (12.2)]. Greater reductions in the Cisatracurium besylate injection, infusion rate may be required with longer durations of administration of isoflurane or with the administration of other inhalational anesthetics.

Patients Undergoing Coronary Artery Bypass Graft (CABG) Surgery

Consider reducing the infusion rate in patients undergoing CABG with induced hypothermia to half the rate required during normothermia [see *Clinical Pharmacology* (12.2)]. Spontaneous recovery from neuromuscular block following discontinuation of Cisatracurium besylate injection, infusion is expected to proceed at a rate comparable to that following administration of a single bolus dose.

Continuous Infusion for Mechanical Ventilation in the Intensive Care Unit (ICU)

During extended need for mechanical ventilation and skeletal muscle relaxation in the intensive care unit (ICU), Cisatracurium besylate injection, may be administered by continuous infusion to adults if a patient has spontaneous recovery of neuromuscular function after the initial Cisatracurium besylate injection, bolus dose. Following recovery from neuromuscular blockade, it may be necessary to re-administer a bolus dose to quickly re-establish neuromuscular blockade prior to starting the continuous infusion.

The recommended Cisatracurium besylate injection, infusion rate in adult patients in the ICU is 3 mcg/kg/minute (range: 0.5 to 10.2 mcg/kg/minute). [see *Dosage and Administration* (2.6)]. Use peripheral nerve stimulation to assess the level of neuromuscular blockade and to appropriately titrate the Cisatracurium besylate injection, infusion rate.

2.6 Rate Tables for Continuous Infusion

The intravenous infusion rate depends upon the Cisatracurium besylate injection, concentration, the desired dose, the patient's weight, and the contribution of the infusion solution to the fluid requirements of the patient. Tables 1 and 2 provide guidelines for the Cisatracurium besylate injection, infusion rate, in mL/hour (equivalent to microdrops/minute when 60 microdrops = 1 mL), in concentrations of 0.1 mg/mL or 0.4 mg/mL, respectively.

- 20 mg/10 mL (2 mg/mL) and benzyl alcohol as preservative in multiple-dose vials (3)
- 200 mg/20 mL (10 mg/mL) in single-dose vials (3)

CONTRAINDICATIONS

- Known hypersensitivity to cisatracurium (4)

WARNINGS AND PRECAUTIONS

- **Residual Paralysis:** Patients with neuromuscular diseases are at higher risk. Use a lower initial bolus dose and consider using a reversal agent in these patients. (2.2, 5.1)
- **Benzyl Alcohol:** Consider combined daily load of benzyl alcohol from all sources when the 10 mL, multiple dose vials are used in infants (4.5.2)
- **Risk of Seizure:** Monitor level of neuromuscular blockade during long-term administration to limit exposure to toxic metabolites (5.3)
- **Hypersensitivity Reactions and Anaphylaxis:** Severe hypersensitivity reactions including anaphylactic reactions have been reported. Consider cross-reactivity among neuromuscular blocking agents, both depolarizing and non-depolarizing. (4, 5.4)
- **Risk of Death due to Medication Errors:** Accidental administration can cause death. (5.5)
- **Inadequate Anesthesia:** Use Cisatracurium besylate in the presence of appropriate sedation or general anesthesia and monitor patients to ensure level of anesthesia is adequate (5.6)

ADVERSE REACTIONS

The most common adverse reactions (0.1% to 0.4%) were bradycardia, hypotension, flushing, bronchospasm, and rash. (6.1)

To report SUSPECTED ADVERSE REACTIONS, contact Piramal Pharma Solutions Inc. at 1-826-206-0832 or FDA at 1-800-FDA-1088 or www.fda.gov/medwatch.

DRUG INTERACTIONS

- **Succinylcholine:** May decrease time to onset of maximum neuromuscular blockade (7.1)
- **Inhalational anesthetics, antibiotics, local anesthetics, magnesium salts, procainamide, lithium, quinidine:** May potentiate or prolong neuromuscular blockade action of Cisatracurium besylate. Use peripheral nerve stimulator and monitor clinical signs of neuromuscular blockade. (5.8, 7.1)
- **Phenoin and Carbamazepine:** May shorten duration of neuromuscular blockade. Use peripheral nerve stimulator and monitor clinical signs of neuromuscular blockade. (5.9, 7.1)

USE IN SPECIFIC POPULATIONS

- **Patients with Hemiparesis or Paraparesis:** Perform neuromuscular monitoring on non-paretic limb (8.9)

See 17 for PATIENT COUNSELING INFORMATION.

Issued: 08/2025

8 USE IN SPECIFIC POPULATIONS

- 8.1 Pregnancy
- 8.2 Lactation
- 8.4 Pediatric Use
- 8.5 Geriatric Use
- 8.6 Patients with Renal Impairment
- 8.7 Patients with Hepatic Impairment
- 8.8 Burn Patients
- 8.9 Patients with Hemiparesis or Paraparesis
- 8.10 Patients with Neuromuscular Disease

10 OVERDOSAGE

11 DESCRIPTION

12 CLINICAL PHARMACOLOGY

- 12.1 Mechanism of Action
- 12.2 Pharmacodynamics
- 12.3 Pharmacokinetics

13 NONCLINICAL TOXICOLOGY

- 13.1 Carcinogenesis, Mutagenesis, Impairment of Fertility

14 CLINICAL STUDIES

- 14.1 Skeletal Muscle Relaxation for Intubation of Adult Patients
- 14.2 Skeletal Muscle Relaxation for Intubation of Pediatric Patients
- 14.3 Skeletal Muscle Relaxation in ICU Patients

16 HOW SUPPLIED/STORAGE AND HANDLING

17 PATIENT COUNSELING INFORMATION

*Sections or subsections omitted from the full prescribing information are not listed.

Table 1. Cisatracurium besylate injection, Infusion Rates for Maintenance of Neuromuscular Blockade During Opioid/Nitrous Oxide/Oxygen Anesthesia with a Concentration of 0.1 mg/mL

| Patient Weight | Drug Delivery Rate (mcg/kg/minute) | | | | |
|----------------|------------------------------------|-----|-----|-----|-----|
| | 1 | 1.5 | 2 | 3 | 5 |
| 10 kg | 6 | 9 | 12 | 18 | 30 |
| 45 kg | 27 | 41 | 54 | 81 | 135 |
| 70 kg | 42 | 63 | 84 | 126 | 210 |
| 100 kg | 60 | 90 | 120 | 180 | 300 |

Table 2. Cisatracurium besylate injection, Infusion Rates for Maintenance of Neuromuscular Blockade During Opioid/Nitrous Oxide/Oxygen Anesthesia with a Concentration of 0.4 mg/mL Drug

| Patient Weight | Delivery Rate (mcg/kg/minute) | | | | |
|----------------|-------------------------------|------|------|------|------|
| | 1 | 1.5 | 2 | 3 | 5 |
| 10 kg | 1.5 | 2.3 | 3 | 4.5 | 7.5 |
| 45 kg | 6.8 | 10.1 | 13.5 | 20.3 | 33.8 |
| 70 kg | 10.5 | 15.8 | 21 | 31.5 | 52.5 |
| 100 kg | 15 | 22.5 | 30 | 45 | 75 |

2.7 Preparation of Cisatracurium besylate injection

Visually inspect Cisatracurium besylate injection, for particulate matter and discoloration prior to administration. If a Cisatracurium besylate injection, solution is cloudy or contains visible particulates, do not use Cisatracurium besylate injection. Cisatracurium besylate injection, is a colorless to slightly yellow or greenish-yellow solution.

Discard unused portion of the 5 mL and 20 mL single-dose vials.

Cisatracurium besylate injection, may be diluted to 0.1 mg/mL in the following solutions:

- 5% Dextrose Injection,
- 0.9% Sodium Chloride Injection, or
- 5% Dextrose and 0.9% Sodium Chloride Injection.

Store these diluted Cisatracurium besylate injection, solutions either in a refrigerator or at room temperature for 24 hours without significant loss of potency.

Cisatracurium besylate injection, also may be diluted to 0.1 mg/mL or 0.2 mg/mL in the following solution:

- Lactated Ringer's and 5% Dextrose Injection

Store this diluted Cisatracurium besylate injection, solution under refrigeration for no more than 24 hours.

Do not dilute Cisatracurium besylate injection, in Lactated Ringer's Injection, due to chemical instability.

2.8 Drug Compatibility

Cisatracurium besylate injection, is compatible and may be administered with the following solutions through Y-site administration:

- 5% Dextrose Injection,
- 0.9% Sodium Chloride Injection,
- 5% Dextrose and 0.9% Sodium Chloride Injection,
- Sufentanil Citrate Injection, diluted as directed
- Alfentanil Hydrochloride Injection, diluted as directed
- Fentanyl Citrate Injection, diluted as directed
- Midazolam Hydrochloride Injection, diluted as directed
- Droperidol Injection, diluted as directed

Cisatracurium besylate injection, is acidic (pH = 3.30 to 3.40) and may not be compatible with alkaline solution having a pH greater than 8.5 (e.g., barbiturate solutions). Therefore, do not administer Cisatracurium besylate injection, and alkaline solutions simultaneously in the same intravenous line.

Cisatracurium besylate injection, is not compatible with propofol injection or ketorolac injection for Y-site administration. Compatibility studies with other parenteral products have not been conducted.

3 DOSAGE FORMS AND STRENGTHS

Cisatracurium besylate injection, is available as a colorless to slightly yellow or greenish-yellow solution in the following strengths:

- 20 mg of cisatracurium besylate in 10 mL (2 mg/mL) in multiple-dose vials (equivalent to 2.68 mg/mL cisatracurium besylate) with benzyl alcohol as a preservative.
- 200 mg of cisatracurium besylate in 20 mL (10 mg/mL) in single-dose vials.

4 CONTRAINDICATIONS

Cisatracurium besylate injection, is contraindicated in patients with known hypersensitivity to cisatracurium. Severe anaphylactic reactions to Cisatracurium besylate injection, have been reported. [see *Warnings and Precautions* (5.4)].

The use of 10 mL Cisatracurium besylate Injection, multiple-dose vials is contraindicated to use in pediatric patients less than 1 month of age and low birth-weight infants because the formulation contains benzyl alcohol [see *Warnings and Precautions* (5.2) and *Use in Specific Populations* (8.4)].

5 WARNINGS AND PRECAUTIONS

5.1 Residual Paralysis

Cisatracurium besylate has been associated with residual paralysis. Patients with neuromuscular diseases (e.g., myasthenia gravis and myasthenic syndrome) and carcinomatosis may be at higher risk of residual paralysis; thus, a lower maximum initial bolus is recommended in these patients. [see *Dosage and Administration* (2.2) and *Use in Specific Populations* (8.10)]. To prevent complications resulting from Cisatracurium besylate-associated residual paralysis, extubation is recommended only after the patient has recovered sufficiently from neuromuscular blockade. Consider use of a reversal agent especially in cases where residual paralysis is more likely to occur. [see *Overdosage* (10)].

5.2 Risk of Serious Adverse Reactions in Infants due to Benzyl Alcohol Preservative in 10 mL Multiple-Dose Vials

Serious and fatal adverse reactions including "gassing syndrome" can occur in neonates and infants treated with benzyl alcohol-preserved drugs, including Cisatracurium besylate injection, (10 mL, multiple-dose vials). This warning is not applicable to the 5 mL and 20 mL Cisatracurium besylate injection, single-dose vials because these vials do not contain benzyl alcohol. The "gassing syndrome" is characterized by central nervous system depression, metabolic acidosis, and gassing respirations.

When prescribing the 10 mL, multiple-dose Cisatracurium besylate injection vials in infants consider the combined daily metabolic load of benzyl alcohol from all sources including Cisatracurium besylate injection. USP (multiple-dose vials contain 9 mg of benzyl alcohol per mL) and other drugs containing benzyl alcohol. The minimum amount of benzyl alcohol at which serious adverse reactions may occur is not known. [see *Use in Specific Populations* (8.4)].

The use of 10 mL Cisatracurium besylate injection multiple-dose vials is contraindicated in pediatric patients less than 1 month of age and low birth-weight infants because these patients are more likely to develop benzyl alcohol toxicity. [see *Contraindications* (4)].

5.3 Risk of Seizure

Laudanosine, an active metabolite of Cisatracurium besylate, has been shown to cause seizures in animals. Cisatracurium besylate-treated patients with renal or hepatic impairment may have higher metabolite concentrations (including laudanosine) than patients with normal renal and hepatic function. [see *Clinical Pharmacology* (12.3)]. Therefore, patients with renal or hepatic impairment receiving extended administration of Cisatracurium besylate may be at higher risk of seizures.

The level of neuromuscular blockade during long-term Cisatracurium besylate administration should be monitored with a nerve stimulator to titrate Cisatracurium besylate administration to the patients' needs and limit exposure to toxic metabolites.

5.4 Hypersensitivity Reactions Including Anaphylaxis

Severe hypersensitivity reactions, including fatal and life-threatening anaphylactic reactions, have been reported. [see *Contraindications* (4)]. There have been reports of wheezing, laryngospasm, bronchospasm, rash and itching following Cisatracurium besylate administration in pediatric patients. Due to the potential severity of these reactions, appropriate precautions such as the immediate availability of appropriate emergency treatment should be taken. Precautions should also be taken in those patients who have had previous anaphylactic reactions to other neuromuscular blocking agents since cross-reactivity between neuromuscular blocking agents, both depolarizing and non-depolarizing, has been reported.

5.5 Risk of Death Due to Medication Errors

Administration of Cisatracurium besylate results in paralysis, which may lead to respiratory arrest and death, a progression that may be more likely to occur in a patient for whom it is not intended. Confirm proper selection of intended product and avoid confusion with other injectable solutions that are present in critical care and other clinical settings. If another healthcare provider is administering the product, ensure that the intended dose is clearly labeled and communicated.

5.6 Risks Due to Inadequate Anesthesia

Neuromuscular blockade in the conscious patient can lead to distress. Use Cisatracurium besylate in the presence of appropriate sedation or general anesthesia. Monitor patients to ensure that the level of anesthesia is adequate.

5.7 Risk for Infection

The 20 mL vial of Cisatracurium besylate is intended only for administration as an infusion for use in a single patient in the ICU. The 20 mL vial should not be used multiple times because there is a higher risk of infection (the 20 mL vial does not contain a preservative).

5.8 Potentiation of Neuromuscular Blockade

Certain drugs may enhance the neuromuscular blocking action of Cisatracurium besylate including inhalational anesthetics, antibiotics, magnesium salts, lithium, local anesthetics, procainamide and quinidine. [see *Drug Interactions* (7.1)]. Additionally, acid-base and/or serum electrolyte abnormalities may potentiate the action of neuromuscular blocking agents. Use peripheral nerve stimulation and monitor the clinical signs of neuromuscular blockade to determine the adequacy of the level of neuromuscular blockade and the need to adjust the Cisatracurium besylate dosage.

5.9 Resistance to Neuromuscular Blockade with Certain Drugs

Shorter durations of neuromuscular block may occur and Cisatracurium besylate infusion rate requirements may be higher in patients chronically administered phenytoin or carbamazepine. [see *Drug Interactions* (7.1) and *Clinical Pharmacology* (12.3)]. Use peripheral nerve stimulation and monitor the clinical signs of neuromuscular blockade to determine the adequacy of neuromuscular blockade and the need to adjust the Cisatracurium besylate dosage.

5.10 Malignant Hyperthermia (MH)

Cisatracurium besylate has not been studied in MH-susceptible patients. Because MH can develop in the absence of established triggering agents, the clinician should be prepared to recognize and treat MH in any patient undergoing general anesthesia.



8.7 Patients with Hepatic Impairment

The pharmacokinetic study analysis in patients with end-stage liver disease undergoing liver transplantation and healthy subjects undergoing elective surgery indicated slightly larger volumes of distribution in liver transplant patients with slightly higher plasma clearances of cisatracurium. The times to maximum neuromuscular blockade were approximately one minute faster in liver transplant patients than in healthy adult patients receiving 0.1 mg/kg Cisatracurium besylate. These minor differences in pharmacokinetics were not associated with clinically significant differences in the recovery profile of Cisatracurium besylate [see *Clinical Pharmacology* (12.3)].

8.8 Burn Patients

Patients with burns have been shown to develop resistance to nondepolarizing neuromuscular blocking agents. The extent of altered response depends upon the size of the burn and the time elapsed since the burn occurred. Cisatracurium besylate has not been studied in patients with burns. However, based on its structural similarity to another neuromuscular blocking agent, consider the possibility of increased dosage requirements and shortened duration of action if Cisatracurium besylate is administered to burn patients.

8.9 Patients with Hemiparesis or Paraparesis

Patients with hemiparesis or paraparesis may demonstrate resistance to nondepolarizing neuromuscular blocking agents in the affected limbs. To avoid inaccurate dosing, perform neuromuscular monitoring on a non-paralytic limb.

8.10 Patients with Neuromuscular Disease

Profound and prolonged neuromuscular blockade may occur in patients with neuromuscular diseases (e.g., myasthenia gravis and myasthenic syndrome) and carcinomatosis. Therefore, a lower maximum initial bolus is recommended in these patients [see *Dosage and Administration* (2.2)].

10 OVERDOSAGE

Overdosage with neuromuscular blocking agents may result in neuromuscular blockade beyond the time needed for surgery and anesthesia. The primary treatment is maintenance of a patent airway and controlled ventilation until recovery of normal neuromuscular function is assured.

Once recovery from neuromuscular block begins, further recovery may be facilitated by administration of a cholinesterase inhibitor (e.g., neostigmine, edrophonium) in conjunction with an appropriate cholinergic inhibitor.

Cholinesterase inhibitors should not be administered when complete neuromuscular blockade is evident or suspected because the reversal of paralysis may not be sufficient to maintain a patent airway and support an appropriate level of spontaneous ventilation.

- **Neostigmine:** Administration of 0.04 to 0.07 mg/kg of neostigmine at approximately 10% recovery from neuromuscular blockade (range: 0 to 15%) produced 95% recovery of the muscle twitch response and a T₁T₁ ratio \geq 70% in an average of 9 to 10 minutes. The times from 25% recovery of the muscle twitch response to a T₁T₁ ratio \geq 70% following these doses of neostigmine averaged 7 minutes. The mean 25% to 75% recovery index following reversal was 3 to 4 minutes.
- **Edrophonium:** Administration of 1 mg/kg of edrophonium at approximately 25% recovery from neuromuscular blockade (range: 16% to 30%) produced 95% recovery and a T₁T₁ ratio \geq 70% in an average of 3 to 5 minutes.

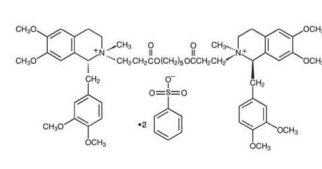
For providers treating patients treated with cholinesterase inhibitors:

- Use a peripheral nerve stimulator to evaluate recovery and antagonism of neuromuscular blockade
- Evaluate for evidence of adequate clinical recovery (e.g., 5-second head lift and grip strength).
- Support ventilation until adequate spontaneous ventilation has resumed.

The onset of antagonism may be delayed in the presence of debilitation, cachexia, carcinomatosis, and the concomitant use of certain broad spectrum antibiotics, or anesthetic agents and other drugs which enhance neuromuscular block or separately cause respiratory depression [see *Drug Interactions* (7.1)]. Under such circumstances the management is the same as that of prolonged neuromuscular block.

11 DESCRIPTION

Cisatracurium besylate is a nondepolarizing skeletal neuromuscular blocker for intravenous administration. Compared to other neuromuscular blockers, it is intermediate in its onset and duration of action. Cisatracurium besylate injection, USP contains cisatracurium besylate as the active pharmaceutical ingredient. Cisatracurium besylate is one of 10 isomers of atracurium besylate and constitutes approximately 15% of that mixture. Cisatracurium besylate is [1R-[1 α ,2 α ,2'(1'R',2'R'')]-2,2'-(1,5-pentanediyldi[bis(3-oxo-3,1-propanediyl)]bis[1-(3,4-dimethoxyphenyl)methyl]-1,2,3,4-tetrahydro-6,7-dimethoxy-2-methylisoquinolinium]) dibenzensulfonate. The molecular formula of the cisatracurium parent base cation is C₂₄H₃₀N₂O₅ and the molecular weight is 392.2. The molecular formula of cisatracurium as the besylate salt is C₃₂H₃₈N₂O₈S₂ and the molecular weight is 1243.49. The structural formula of cisatracurium besylate is:



The log of the partition coefficient of cisatracurium besylate is -2.12 in a 1-octanol/distilled water system at 25°C.

Cisatracurium besylate injection, USP is a sterile, non-pyrogenic aqueous solution.

Each mL in the single-dose vials contains either 2 mg or 10 mg of cisatracurium (equivalent to 2.68 mg and 13.38 mg of cisatracurium besylate, respectively), and benzenesulfonic acid as pH adjuster in water for injection.

Each mL in the multiple-dose vials contains 2 mg of cisatracurium (equivalent to 2.68 mg of cisatracurium besylate), benzenesulfonic acid as pH adjuster, and also contains 9 mg of benzyl alcohol as preservative, in water for injection.

The pH of Cisatracurium besylate injection, USP is between 3.30 to 3.40.

12 CLINICAL PHARMACOLOGY

12.1 Mechanism of Action

Cisatracurium besylate binds competitively to cholinergic receptors on the motor end-plate to antagonize the action of acetylcholine, resulting in blockade of neuromuscular transmission. This action is antagonized by acetylcholinesterase inhibitors such as neostigmine.

12.2 Pharmacodynamics

The average ED₅₀ (dose required to produce 95% suppression of the adductor pollicis muscle twitch response to ulnar nerve stimulation) of cisatracurium is 0.05 mg/kg (range: 0.048 to 0.053) in adults receiving opioid/neuromuscular blockade/oxygen anesthesia.

The pharmacodynamics of various Cisatracurium besylate doses administered over 5 to 10 seconds during opioid/neuromuscular blockade/oxygen anesthesia are summarized in Table 5. When the Cisatracurium besylate dose is doubled, the clinically effective duration of blockade increases by approximately 25 minutes. Once recovery begins, the rate of recovery is independent of dose.

Isulfurane or enflurane administered with nitrous oxide/oxygen to achieve a 1.25 MAC (Minimum Alveolar Concentration) prolonged the clinically effective duration of action of initial and maintenance Cisatracurium besylate doses, and decreased the average infusion rate requirement of Cisatracurium besylate. The magnitude of these effects depended on the duration of administration of the volatile agents:

- Fifteen to 30 minutes of exposure to 1.25 MAC isoflurane or enflurane had minimal effects on the duration of action of initial doses of Cisatracurium besylate.
- In surgical procedures during enflurane or isoflurane anesthesia greater than 30 minutes, less frequent maintenance dosing, lower maintenance doses, or reduced infusion rates of Cisatracurium besylate were required. The average infusion rate requirement was decreased by as much as 30% to 40% [see *Drug Interactions* (7.1)].

The onset, duration of action, and recovery profiles of Cisatracurium besylate during propofol/oxygen or propofol/neuromuscular blockade/oxygen anesthesia were similar to those during opioid/neuromuscular blockade/oxygen anesthesia (see Table 5).

Repeated administration of maintenance Cisatracurium besylate doses or a continuous Cisatracurium besylate infusion for up to 3 hours was not associated with development of tachyphylaxis or cumulative neuromuscular blocking effects. The time needed to recover from successive maintenance doses did not change with the number of doses administered when partial recovery occurred between doses. The rate of spontaneous recovery of neuromuscular function after Cisatracurium besylate infusion was independent of the duration of infusion and comparable to the rate of recovery following initial bolus (see Table 5).

Pediatric patients including infants generally had a shorter time to maximum neuromuscular blockade and a faster recovery from neuromuscular blockade compared to adults treated with the same weight-based doses (see Table 5).

Table 5. Pharmacodynamic Dose Response* of Cisatracurium besylate During Opioid/Nitrous Oxide/Oxygen Anesthesia

| Cisatracurium besylate Dose | Time to 90% Block in minutes | Time to 100% Block in minutes | 5% Recovery in minutes | 25% Recovery in minutes | 50% Recovery in minutes | T ₁ T ₁ Ratio [†] in minutes | 25%-75% Recovery Index in minutes |
|--|------------------------------|-------------------------------|------------------------|-------------------------|-------------------------|---|-----------------------------------|
| Adults | | | | | | | |
| 0.1 mg/kg (2 × ED ₅₀) (n=38) | 3.3 (1.0-8.7) | 5.0 (1.2-17.2) | 33 (15-51) | 42 (22-63) | 64 (25-93) | 64 (32-91) | 13 (5-30) |
| 0.15 mg/kg (3 × ED ₅₀) (n=39) | 2.6 (1.0-4.4) | 3.5 (1.6-6.8) | 46 (28-65) | 55 (44-74) | 76 (60-103) | 75 (63-98) | 13 (11-16) |
| 0.2 mg/kg (4 × ED ₅₀) (n=30) | 2.4 (1.5-4.5) | 2.9 (1.9-5.2) | 59 (31-103) | 65 (43-103) | 81 (53-114) | 85 (55-114) | 12 (2-30) |
| 0.25 mg/kg (5 × ED ₅₀) (n=15) | 1.6 (0.8-3.3) | 1.2 (0.3-7) | 70 (58-85) | 78 (66-86) | 91 (76-109) | 97 (82-113) | 8 (5-12) |
| 0.4 mg/kg (8 × ED ₅₀) (n=15) | 1.5 (1.3-1.8) | 1.9 (1.4-2.3) | 83 (37-103) | 91 (59-107) | 121 (110-134) | 126 (115-137) | 14 (10-18) |
| Infants (1-23 months of age) | | | | | | | |
| 0.15 mg/kg** (n=18-26) | 1.5 (0.7-3.2) | 2.0 (1.3-4.3) | 36 (28-50) | 43 (34-58) | 64 (54-84) | 59 (49-76) | 11.3 (7.3-18.3) |
| Pediatric Patients 2-12 years | | | | | | | |
| 0.08 mg/kg [†] (2 × ED ₅₀) (n=60) | 2.2 (1.2-6.8) | 3.3 (1.7-9.7) | 22 (11-38) | 29 (20-46) | 52 (37-64) | 50 (37-62) | 11 (7-15) |
| 0.1 mg/kg (n=16) | 1.7 (1.3-2.7) | 2.8 (1.8-6.7) | 21 (13-31) | 28 (21-38) | 46 (37-58) | 44 (36-58) | 10 (7-12) |
| 0.15 mg/kg** (n=23-24) | 2.1 (1.3-2.8) | 3.0 (1.5-8.0) | 29 (19-38) | 36 (29-46) | 55 (45-72) | 54 (44-66) | 10.6 (8.5-17.7) |

Values shown are the median values from the means from individual studies. Values in parentheses are ranges of individual patient values.
[†] Clinically effective duration of block.
[‡] Train-of-four ratio.
[§] n=the number of patients with Time to Maximum Block data.
[¶] Propofol anesthesia.
^{**} Halothane anesthesia.
^{††} Thiopentone, alfentanil, N₂O/O₂ anesthesia.

Hemodynamics Profile
Cisatracurium besylate had no dose-related effects on mean arterial blood pressure (MAP) or heart rate (HR) following doses ranging from 0.1 mg/kg to 0.4 mg/kg, administered over 5 to 10 seconds, in healthy adult patients (see Figure 1) or in patients with serious cardiovascular disease (see Figure 2).

A total of 141 patients undergoing coronary artery bypass graft (CABG) surgery were administered Cisatracurium besylate in three active-controlled clinical trials and received doses ranging from 0.1 mg/kg to 0.4 mg/kg. While the hemodynamic profile was comparable in both the Cisatracurium besylate and active control groups, data for doses above 0.3 mg/kg in this population are limited.

Figure 1. Maximum Percent Change from Preinjection in HR and MAP During First 5 Minutes after Initial 4 × ED₅₀ to 8 × ED₅₀ Cisatracurium besylate Doses in Healthy Adults Who Received Opioid/Nitrous Oxide/Oxygen Anesthesia (n = 44)

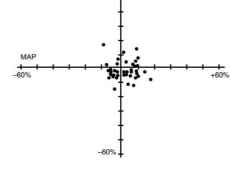
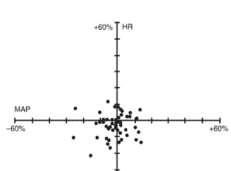


Figure 2. Percent Change from Preinjection in HR and MAP 10 Minutes After an Initial 4 × ED₅₀ to 8 × ED₅₀ Cisatracurium besylate Dose in Patients Undergoing CABG Surgery Receiving Oxygen/Fentanyl/Midazolam/Anesthesia (n = 54)



No clinically significant changes in MAP or HR were observed following administration of doses up to 0.1 mg/kg Cisatracurium besylate over 5 to 10 seconds in 2- to 12-year-old pediatric patients who received either halothane/nitrous oxide/oxygen or opioid/neuromuscular blockade/oxygen anesthesia. Doses of 0.15 mg/kg Cisatracurium besylate administered over 5 seconds were not consistently associated with changes in HR and MAP in pediatric patients aged 1 month to 12 years who received opioid/neuromuscular blockade/oxygen or halothane/nitrous oxide/oxygen anesthesia.

12.3 Pharmacokinetics

The neuromuscular blocking activity of Cisatracurium besylate is due to parent drug. Cisatracurium plasma concentration-time data following IV bolus administration are best described by a two-compartment open model (with elimination from both compartments) with an elimination half-life (t_{1/2}) of 22 minutes, a plasma clearance (CL) of 4.57 mL/min/kg, and a volume of distribution at steady state (V_{ss}) of 145 mL/kg.

Results from population pharmacokinetic/pharmacodynamic (PK/PD) analyses from 241 healthy surgical patients are summarized in Table 6.

Table 6. Key Population PK/PD Parameter Estimates for Cisatracurium in Healthy Surgical Patients* Following 0.1 (2 × ED₅₀) to 0.4 mg/kg (8 × ED₅₀) of Cisatracurium besylate

| Parameter | Estimate [†] | Magnitude of Interpatient Variability (CV) [‡] |
|--------------------------------------|-----------------------|---|
| CL (mL/min/kg) | 4.57 | 16% |
| V _{ss} (mL/kg) | 145 | 27% |
| k _{el} (min ⁻¹) | 0.0575 | 61% |
| EC ₅₀ (ng/mL) | 141 | 52% |

*Healthy male non-obese patients 19-64 years of age with creatinine clearance values greater than 70 mL/minute who received Cisatracurium besylate during opioid anesthesia and had venous samples collected.

[†]The percent standard error of the mean (%SEM) ranged from 3% to 12% indicating good precision for the PK/PD estimates.
[‡]Expressed as a coefficient of variation, the %SEM ranged from 20% to 35% indicating adequate precision for the estimates of interpatient variability.

[§]V_{ss} is the volume of distribution at steady state estimated using a two-compartment model with elimination from both compartments. V_{ss} is equal to the sum of the volume in the central compartment (V_c) and the volume in the peripheral compartment (V_p); interpatient variability could only be estimated for V_c.

[¶]Rate constant describing the equilibration between plasma concentrations and neuromuscular block
^{**}Concentration required to produce 50% T₁ suppression; an index of patient sensitivity.

The magnitude of interpatient variability in CL was low (16%), as expected based on the importance of Hofmann elimination. The magnitudes of interpatient variability in CL and volume of distribution were low in comparison to those for k_{el} and EC₅₀. This suggests that any alterations in the time course of Cisatracurium besylate-induced neuromuscular blockade were more likely to be due to variability in the PD parameters than in the PK parameters. Parameter estimates from the population PK analyses were supported by noncompartmental PK analyses on data from healthy patients and from specific populations.

Conventional PK analyses have shown that the PK of cisatracurium are proportional to those between 0.1 (2 × ED₅₀) and 0.2 (4 × ED₅₀) mg/kg cisatracurium. In addition, population PK analyses revealed no statistically significant effect of initial dose on CL for doses between 0.1 (2 × ED₅₀) and 0.4 (8 × ED₅₀) mg/kg cisatracurium.

Distribution

The volume of distribution of cisatracurium is limited by its large molecular weight and high polarity. The V_{ss} was equal to 145 mL/kg (Table 6) in healthy 19- to 64-year-old surgical patients receiving opioid anesthesia. The V_{ss} was 1.5 times larger in similar patients receiving inhalation anesthesia.

The binding of cisatracurium to plasma proteins has not been successfully studied due to its rapid degradation at physiologic pH. Inhibition of degradation requires nonphysiological conditions of temperature and pH which are associated with changes in protein binding.

Elimination

Organ-independent Hofmann elimination (a chemical process dependent on pH and temperature) is the predominant pathway for the elimination of cisatracurium. The liver and kidney play a minor role in the elimination of cisatracurium but are primary pathways for the elimination of metabolites. Therefore, the t_{1/2} values of metabolites (including laudanosine) are longer in patients with renal or hepatic impairment and metabolite concentrations may be higher after long-term administration [see *Warnings and Precautions* (5.3)].

The mean CL values for cisatracurium ranged from 4.5 to 5.7 mL/min/kg in studies of healthy surgical patients. The compartmental PK modeling suggests that approximately 80% of the cisatracurium CL is accounted for by Hofmann elimination and the remaining 20% by renal and hepatic elimination. These findings are consistent with the low magnitude of interpatient variability in CL (16%) estimated as part of the population PK/PD analyses and with the recovery of parent and metabolites in urine.

In studies of healthy surgical patients, mean t_{1/2} values of cisatracurium ranged from 22 to 29 minutes and were consistent with the t_{1/2} of cisatracurium in vitro (29 minutes). The mean ± SD t_{1/2} values of laudanosine were 3.1 ± 0.4 and 3.3 ± 2.1 hours in healthy surgical patients receiving Cisatracurium besylate (n=10).

Metabolism

The degradation of cisatracurium was largely independent of liver metabolism. Results from in vitro experiments suggest that cisatracurium undergoes Hofmann elimination (a pH and temperature-dependent chemical process) to form laudanosine [see *Warnings and Precautions* (5.3)] and the monoquaternary acrylate metabolite, neither of which has any neuromuscular blocking activity. The monoquaternary acrylate undergoes hydrolysis by non-specific plasma esterases to form the monoquaternary alcohol (MOA) metabolite. The MOA metabolite can also undergo Hofmann elimination but at a much slower rate than cisatracurium. Laudanosine is further metabolized to desmethyl metabolites which are conjugated with glucuronic acid and excreted in the urine.

The laudanosine metabolite of cisatracurium has been noted to cause transient hypotension and, in higher doses, cerebral excitatory effects when administered to several animal species. The relationship between CNS excitation and laudanosine concentrations in humans has not been established [see *Warnings and Precautions* (5.3)].

During IV infusions of Cisatracurium besylate, peak plasma concentrations (C_{max}) of laudanosine and the MOA metabolite were approximately 6% and 11% of the parent compound, respectively. The C_{max} values of laudanosine in healthy surgical patients receiving infusions of Cisatracurium besylate were mean ± SD C_{max} 60 ± 52 ng/mL.

During IV infusions of Cisatracurium besylate, peak plasma concentrations (C_{max}) of laudanosine and the MOA metabolite were approximately 6% and 11% of the parent compound, respectively. The C_{max} values of laudanosine in healthy surgical patients receiving infusions of Cisatracurium besylate were mean ± SD C_{max} 60 ± 52 ng/mL.

Excretion

Following ¹⁴C-cisatracurium administration to 6 healthy male patients, 95% of the dose was recovered in the urine (mostly as conjugated metabolites) and 4% in the feces; less than 10% of the dose was excreted as unchanged parent drug in the urine. In 12 healthy surgical patients receiving non-radio-labeled cisatracurium who had Foley catheters placed for surgical management, approximately 15% of the dose was excreted unchanged in the urine.

Special Populations

Geriatric Patients

The results of conventional PK analysis from a study of 12 healthy elderly patients and 12 healthy young adult patients who received a single IV Cisatracurium besylate dose of 0.1 mg/kg are summarized in Table 7. Plasma clearances of cisatracurium were not affected by age; however, the volumes of distribution were slightly larger in elderly patients than in young patients resulting in slightly longer t_{1/2} values for cisatracurium.

The rate of equilibration between plasma cisatracurium concentrations and neuromuscular blockade was slower in elderly patients than in young patients (mean ± SD k_{el}: 0.071 ± 0.036 and 0.105 ± 0.021 minutes⁻¹, respectively); there was no difference in the patient sensitivity to cisatracurium-induced block, as indicated by EC₅₀ values (mean ± SD EC₅₀: 91 ± 22 and 89 ± 23 ng/mL, respectively). These changes were consistent with the 1-minute slower times to maximum block in elderly patients receiving 0.1 mg/kg Cisatracurium besylate, when compared to young patients receiving the same dose. The minor differences in PK/PD parameters of cisatracurium between elderly patients and young patients were not associated with clinically significant differences in the recovery profile of Cisatracurium besylate.

Following ¹⁴C-cisatracurium administration to 6 healthy male patients, 95% of the dose was recovered in the urine (mostly as conjugated metabolites) and 4% in the feces; less than 10% of the dose was excreted as unchanged parent drug in the urine. In 12 healthy surgical patients receiving non-radio-labeled cisatracurium who had Foley catheters placed for surgical management, approximately 15% of the dose was excreted unchanged in the urine.

Special Populations

Geriatric Patients

The results of conventional PK analysis from a study of 12 healthy elderly patients and 12 healthy young adult patients who received a single IV Cisatracurium besylate dose of 0.1 mg/kg are summarized in Table 7. Plasma clearances of cisatracurium were not affected by age; however, the volumes of distribution were slightly larger in elderly patients than in young patients resulting in slightly longer t_{1/2} values for cisatracurium.

The rate of equilibration between plasma cisatracurium concentrations and neuromuscular blockade was slower in elderly patients than in young patients (mean ± SD k_{el}: 0.071 ± 0.036 and 0.105 ± 0.021 minutes⁻¹, respectively); there was no difference in the patient sensitivity to cisatracurium-induced block, as indicated by EC₅₀ values (mean ± SD EC₅₀: 91 ± 22 and 89 ± 23 ng/mL, respectively). These changes were consistent with the 1-minute slower times to maximum block in elderly patients receiving 0.1 mg/kg Cisatracurium besylate, when compared to young patients receiving the same dose. The minor differences in PK/PD parameters of cisatracurium between elderly patients and young patients were not associated with clinically significant differences in the recovery profile of Cisatracurium besylate.

Table 7. Pharmacokinetic Parameters* of Cisatracurium in Healthy Elderly and Young Adult Patients Following 0.1 mg/kg (2 × ED₅₀) of Cisatracurium besylate (Isulfurane/Nitrous Oxide/Oxygen Anesthesia)

| Parameter | Healthy Elderly Patients | Healthy Young Adult Patients |
|---|--------------------------|------------------------------|
| Elimination Half-Life (t _{1/2} , min) | 25.8 ± 3.6 [†] | 22.1 ± 2.5 |
| Volume of Distribution at Steady State [‡] (mL/kg) | 156 ± 17 [†] | 133 ± 15 |
| Plasma Clearance (mL/min/kg) | 5.7 ± 1.0 | 5.3 ± 0.9 |

*Values presented are mean ± SD.
[†]P < 0.05 for comparisons between healthy elderly and healthy young adult patients.
[‡]Volume of distribution is underestimated because elimination from the peripheral compartment is ignored.

Patients with Hepatic Impairment

Table 8 summarizes the conventional PK analysis from a study of Cisatracurium besylate in 13 patients with end-stage liver disease undergoing liver transplantation and 11 healthy adult patients undergoing elective surgery. The slightly larger volumes of distribution in liver transplant patients were associated with slightly higher plasma clearances of cisatracurium. The parallel changes in these parameters resulted in no difference in t_{1/2} values. There were no differences in k_{el} or EC₅₀ between patient groups. The times to maximum neuromuscular blockade were approximately one minute faster in liver transplant patients than in healthy adult patients receiving 0.1 mg/kg Cisatracurium besylate. These minor PK differences were not associated with clinically significant differences in the recovery profile of Cisatracurium besylate.

The t_{1/2} values of metabolites are longer in patients with hepatic disease and concentrations may be higher after long-term administration.

Table 8. Pharmacokinetic Parameters* of Cisatracurium in Healthy Adult Patients and in Patients Undergoing Liver Transplantation Following 0.1 mg/kg (2 × ED₅₀) of Cisatracurium besylate (Isulfurane/Nitrous Oxide/Oxygen Anesthesia)

| Parameter | Liver Transplant Patients | Healthy Adult Patients |
|---|---------------------------|------------------------|
| Elimination Half-Life (t _{1/2} , min) | 24.4 ± 2.9 | 23.5 ± 3.5 |
| Volume of Distribution at Steady State [‡] (mL/kg) | 195 ± 38 [†] | 161 ± 23 |
| Plasma Clearance (mL/min/kg) | 6.6 ± 1.1 [†] | 5.7 ± 0.8 |

*Values presented are mean ± SD.
[†]P < 0.05 for comparisons between liver transplant patients and healthy adult patients.
[‡]Volume of distribution is underestimated because elimination from the peripheral compartment is ignored.

Patients with Renal Impairment: Results from a conventional PK study of Cisatracurium besylate in 13 healthy adult patients and 15 patients with end-stage renal disease (ESRD) who had elective surgery are summarized in Table 9. The PK/PD parameters of cisatracurium were similar in healthy adult patients and ESRD patients. The times to 90% neuromuscular blockade were approximately one minute slower in ESRD patients following 0.1 mg/kg Cisatracurium besylate. There were no differences in the durations or rates of recovery of Cisatracurium besylate between ESRD and healthy adult patients.

The t_{1/2} values of metabolites are longer in patients with hepatic disease and concentrations may be higher after long-term administration.

Population PK analyses showed that patients with creatinine clearances < 70 mL/min had a slower rate of equilibration between plasma concentrations and neuromuscular block than patients with normal renal function; this change was associated with a slightly slower (-40 seconds) predicted time to 90% T₁ suppression in patients with renal impairment following 0.1 mg/kg Cisatracurium besylate. There was no clinically significant alteration in the recovery profile of cisatracurium besylate in patients with renal impairment. The recovery profile of Cisatracurium besylate is unchanged in the presence of renal or hepatic failure, which is consistent with predominantly organ-independent elimination.

Table 9. Pharmacokinetic Parameters* for Cisatracurium in Healthy Adult Patients and in Patients With End-Stage Renal Disease (ESRD) Who Received 0.1 mg/kg (2 × ED₅₀) of Cisatracurium besylate (Opioid/Nitrous Oxide/Oxygen Anesthesia)

| Parameter | Healthy Adult Patients | ESRD Patients |
|---|------------------------|---------------|
| Elimination Half-Life (t _{1/2} , min) | 29.4 ± 4.1 | 32.3 ± 6.3 |
| Volume of Distribution at Steady State [‡] (mL/kg) | 149 ± 35 | 160 ± 32 |
| Plasma Clearance (mL/min/kg) | 4.66 ± 0.86 | 4.26 ± 0.82 |

*Values presented are mean ± SD.
[†]Volume of distribution is underestimated because elimination from the peripheral compartment is ignored.

Intensive Care Unit (ICU) Patients

The PK of cisatracurium and its metabolites were determined in six ICU patients who received Cisatracurium besylate and are presented in Table 10. The relationships between plasma cisatracurium concentrations and neuromuscular blockade have not been evaluated in ICU patients. Limited PK data are available for ICU patients with hepatic or renal impairment who received Cisatracurium besylate. Relative to Cisatracurium besylate-treated ICU patients with normal renal and hepatic function, metabolite concentrations (plasma and tissues) may be higher in Cisatracurium besylate-treated ICU patients with renal or hepatic impairment [see *Warnings and Precautions* (5.3)].

Table 10. Parameter Estimates* for Cisatracurium and Metabolites in ICU Patients After Long-Term (24-48 Hour) Administration of Cisatracurium besylate

| Parameter | Cisatracurium (n = 6) |
|-----------------|-----------------------|
| Parent Compound | |
| CL (mL/min/kg) | 7.45 ± 1.02 |
| t | |