

HIGHLIGHTS OF PRESCRIBING INFORMATION

These highlights do not include all the information needed to use LISINOPRIL TABLETS safely and effectively. See full prescribing information for LISINOPRIL TABLETS.

LISINOPRILtablets, for oral use

Initial U.S. Approval: 1987

WARNING: FETAL TOXICITY	
See full prescribing information for complete boxed warning.	
<ul style="list-style-type: none"><li>When pregnancy is detected, discontinue lisinopril tablets as soon as possible (5.1).</li><li>Drugs that act directly on the renin-angiotensin system can cause injury and death to the developing fetus (5.1).</li></ul>	
INDICATIONS AND USAGE	
Lisinopril tablets are an angiotensin converting enzyme (ACE) inhibitor indicated for: <ul style="list-style-type: none"><li>Treatment of hypertension in adults and pediatric patients ≥6 years of age (1.1)</li><li>Adjunctive therapy for heart failure (1.2)</li><li>Treatment of acute myocardial infarction (1.3)</li></ul>	
DOSAGE AND ADMINISTRATION	
<ul style="list-style-type: none"><li>Hypertension: Initiate adults at 10 mg (monotherapy) or 5 mg (on a diuretic) once daily. Titrate up to 40 mg daily based on response. Initial dose in patients 6 years of age and older is 0.07 mg/kg (up to 5 mg total) once daily (2.1)</li><li>Heart Failure: Initiate with 5 mg once daily. Increase dose as tolerated to 40 mg daily (2.2)</li><li>Acute Myocardial Infarction (MI): Give 5 mg within 24 hours of MI followed by 5 mg after 24 hours, then 10 mg once daily (2.3)</li><li>Renal Impairment: For patients with creatinine clearance 10 to 30 mL/min, halve the usual initial dose. For creatinine clearance &lt; 10 mL/min or on hemodialysis, initiate at 2.5 mg (2.4)</li></ul>	
DOSAGE FORMS AND STRENGTHS	
<ul style="list-style-type: none"><li>Tablets (lisinopril content): 2.5 mg, 5 mg, 10 mg, 20 mg, 30 mg, 40 mg (3)</li></ul>	
CONTRAINDICATIONS	
<ul style="list-style-type: none"><li>Angioedema or a history of hereditary or idiopathic angioedema (4)</li><li>Hypersensitivity (4)</li><li>Coadministration of aliskiren with lisinopril tablets in patients with diabetes (4, 7.4)</li><li>Lisinopril tablets are contraindicated in combination with a neprilysin inhibitor (e.g., sacubitril). Do not administer lisinopril tablets within 36 hours of switching to or from sacubitril/valsartan, a product containing a neprilysin inhibitor (4)</li></ul>	

FULL PRESCRIBING INFORMATION: CONTENTS\*

WARNING: FETAL TOXICITY

1 INDICATIONS AND USAGE

- 1.1 Hypertension  
1.2 Heart Failure  
1.3 Acute Myocardial Infarction

2 DOSAGE AND ADMINISTRATION

- 2.1 Hypertension  
2.2 Heart Failure  
2.3 Acute Myocardial Infarction  
2.4 Dose in Patients with Renal Impairment

3 DOSAGE FORMS AND STRENGTHS

4 CONTRAINDICATIONS

5 WARNINGS AND PRECAUTIONS

- 5.1 Fetal Toxicity  
5.2 Angioedema and Anaphylactoid Reactions  
5.3 Impaired Renal Function  
5.4 Hypotension  
5.5 Hyperkalemia  
5.6 Hepatic Failure

6 ADVERSE REACTIONS

- 6.1 Clinical Trials Experience  
6.2 Postmarketing Experience

7 DRUG INTERACTIONS

- 7.1 Diuretics  
7.2 Antidiabetics  
7.3 Non-Steroidal Anti-Inflammatory Agents Including Selective Cyclooxygenase 2 Inhibitors (COX-2 Inhibitors)  
7.4 Dual Blockade of the Renin-Angiotensin System (RAS)

FULL PRESCRIBING INFORMATION

WARNING: FETAL TOXICITY	
When pregnancy is detected, discontinue lisinopril tablets as soon as possible [see Warnings and Precautions (5.1)] Drugs that act directly on the renin-angiotensin system can cause injury and death to the developing fetus [see Warnings and Precautions (5.1)].	
1 INDICATIONS AND USAGE	
1.1 Hypertension	
Lisinopril tablets are indicated for the treatment of hypertension in adult patients and pediatric patients 6 years of age and older to lower blood pressure. Lowering blood pressure lowers the risk of fatal and non-fatal cardiovascular events, primarily strokes and myocardial infarctions. These benefits have been seen in controlled trials of antihypertensive drugs from a wide variety of pharmacologic classes.	
Control of high blood pressure should be part of comprehensive cardiovascular risk management, including, as appropriate, lipid control, diabetes management, antithrombotic therapy, smoking cessation, exercise, and limited sodium intake. Many patients will require more than 1 drug to achieve blood pressure goals. For specific advice on goals and management, see published guidelines, such as those of the National High Blood Pressure Education Program's Joint National Committee on Prevention, Detection, Evaluation, and Treatment of High Blood Pressure (JNC).	
Numerous antihypertensive drugs, from a variety of pharmacologic classes and with different mechanisms of action, have been shown in randomized controlled trials to reduce cardiovascular morbidity and mortality, and it can be concluded that it is blood pressure reduction, and not some other pharmacologic property of the drugs, that is largely responsible for those benefits. The largest and most consistent cardiovascular outcome benefit has been a reduction in the risk of stroke, but reductions in myocardial infarction and cardiovascular mortality also have been seen regularly.	
Elevated systolic or diastolic pressure causes increased cardiovascular risk, and the absolute risk increase per mmHg is greater at higher blood pressures, so that even modest reductions of severe hypertension can provide substantial benefit. Relative risk reduction from blood pressure reduction is similar across populations with varying absolute risk, so the absolute benefit is greater in patients who are at higher risk independent of their hypertension (for example, patients with diabetes or hyperlipidemia), and such patients would be expected to benefit from more aggressive treatment to a lower blood pressure goal.	
Some antihypertensive drugs have smaller blood pressure effects (as monotherapy) in Black patients, and many antihypertensive drugs have additional approved indications and effects (e.g., on angina, heart failure, or diabetic kidney disease). These considerations may guide selection of therapy.	

Lisinopril tablets may be administered alone or with other antihypertensive agents [see Clinical Studies (14.1)].

1.2 Heart Failure

Lisinopril tablets are indicated to reduce signs and symptoms of heart failure in patients who are not responding adequately to diuretics and digitalis [see Clinical Studies (14.2)].

1.3 Acute Myocardial Infarction

Lisinopril tablets are indicated for the reduction of mortality in treatment of hemodynamically stable patients within 24 hours of acute myocardial infarction. Patients should receive, as appropriate, the standard recommended treatments such as thrombolytics, aspirin and beta-blockers [see Clinical Studies (14.3)].

2 DOSAGE AND ADMINISTRATION

2.1 Hypertension

Initial therapy in adults: The recommended initial dose is 10 mg once a day. Adjust dosage according to blood pressure response. The usual dosage range is 20 to 40 mg per day administered in a single daily dose. Doses up to 80 mg have been used but do not appear to give a greater effect.

Use with Diuretics in Adults

If blood pressure is not controlled with lisinopril tablets alone, a low dose of a diuretic may be added (e.g., hydrochlorothiazide 12.5 mg).

The recommended starting dose in adult patients with hypertension taking diuretics is 5 mg once per day [see Drug Interactions (7.1)].

Pediatric Patients 6 Years of Age and Older with Hypertension

For pediatric patients with glomerular filtration rate ≥ 30 mL/min/1.73 m<sup>2</sup>, the recommended starting dose is 0.07 mg/kg once daily (up to 5 mg total). Dosage should be adjusted according to blood pressure response up to a maximum of 0.61 mg/kg (up to 40 mg) once daily. Doses above 0.61 mg/kg (or in excess of 40 mg) have not been studied in pediatric patients [see Clinical Pharmacology (12.3)].

Lisinopril tablets are not recommended in pediatric patients < 6 years or in pediatric patients with glomerular filtration rate < 30 mL/min/1.73 m<sup>2</sup> [see Use in Specific Populations (8.4) and Clinical Studies (14.1)].

2.2 Heart Failure

The recommended starting dose for lisinopril tablets, when used with diuretics and (usually) digitalis as adjunctive therapy is 5 mg once daily. The recommended starting dose in these patients with hyponatremia (serum sodium < 130 mEq/L) is 2.5 mg once daily. Increase as tolerated to a maximum of 40 mg once daily.

Diuretic dose may need to be adjusted to help minimize hypovolemia, which may contribute to hypotension [see Warnings and Precautions (5.4) and Drug Interactions (7.1)]. The appearance of hypotension after the initial dose of lisinopril tablets does not preclude subsequent careful dose titration with the drug, following effective management of the hypotension.

2.3 Acute Myocardial Infarction

In hemodynamically stable patients within 24 hours of the onset of symptoms of acute myocardial infarction, give lisinopril tablets 5 mg orally, followed by 5 mg after 24 hours, 10 mg after 48 hours and then 10 mg once daily. Dosing should continue for at least 6 weeks.

Initiate therapy with 2.5 mg in patients with a low systolic blood pressure (100 to 120 mmHg) during the first 3 days after the infarct [see Warnings and Precautions (5.4)]. If hypotension occurs (systolic blood pressure ≤100 mmHg) consider doses of 2.5 or 5 mg. If prolonged hypotension occurs (systolic blood pressure < 90 mmHg for more than 1 hour) discontinue lisinopril tablets.

2.4 Dose in Patients with Renal Impairment

No dose adjustment of lisinopril tablet is required in patients with creatinine clearance > 30 mL/min. In patients with creatinine clearance 10 to 30 mL/min, reduce the initial dose of lisinopril tablets to half of the usual recommended dose (i.e., hypertension, 5 mg; heart failure or acute MI, 2.5 mg). For patients on hemodialysis or creatinine clearance < 10 mL/min, the recommended initial dose is 2.5 mg once daily [see Use in Specific Populations (8.7) and Clinical Pharmacology (12.3)].

WARNINGS AND PRECAUTIONS

- Angioedema: Discontinue lisinopril tablets (5.2)
- Renal impairment: Monitor renal function periodically (5.3)
- Hypotension: Monitor blood pressure after initiation (5.4)
- Hyperkalemia: Monitor serum potassium periodically (5.5)
- Cholestatic jaundice and hepatic failure: Discontinue lisinopril tablets (5.6)

ADVERSE REACTIONS

Common adverse reactions (events 2% greater than on placebo):

- Hypertension: headache, dizziness and cough (6.1)
- Heart Failure: hypotension and chest pain (6.1)
- Acute Myocardial Infarction: hypotension (6.1)

To report SUSPECTED ADVERSE REACTIONS, contact Camber Pharmaceuticals, Inc. at 1-866-495-1995 or FDA at 1-800-FDA-1088 or www.fda.gov/medwatch.

DRUG INTERACTIONS

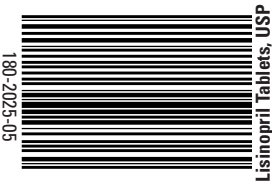
- Diuretics: Excessive drop in blood pressure (7.1)
- NSAIDs: Increased risk of renal impairment and loss of antihypertensive efficacy (7.3)
- Dual inhibition of the renin-angiotensin system: Increased risk of renal impairment, hypotension, syncope, and hyperkalemia (7.4)
- Lithium: Symptoms of lithium toxicity (7.5)
- Gold: Nitritoid reactions (7.6)

USE IN SPECIFIC POPULATIONS

- Pregnancy: Discontinue lisinopril if pregnancy is detected (5.1, 8.1)
- Pediatrics: Safety and effectiveness have not been established in patients < 6 years of age or with glomerular filtration rate < 30 mL/min/1.73 m<sup>2</sup> (8.4)
- Race: Less antihypertensive effect in Blacks than non-Blacks (8.6)

See 17 for PATIENT COUNSELING INFORMATION.

Revised: 05/25



*Surgery/Anesthesia:* In patients undergoing major surgery or during anesthesia with agents that produce hypotension, lisinopril may block angiotensin II formation secondary to compensatory renin release. If hypotension occurs and is considered to be due to this mechanism, it can be corrected by volume expansion.

5.5 Hyperkalemia

Monitor serum potassium periodically in patients receiving lisinopril. Drugs that inhibit the renin-angiotensin system can cause hepatic necrosis and sometimes death. The mechanism of this syndrome is not understood. Patients receiving ACE inhibitors who develop jaundice or marked elevations of hepatic enzymes should discontinue the ACE inhibitor and receive appropriate medical treatment.

5.6 Hepatic Failure

ACE inhibitors have been associated with a syndrome that starts with cholestatic jaundice or hepatitis and progresses to fulminant hepatic necrosis and sometimes death. The mechanism of this syndrome is not understood. Patients receiving ACE inhibitors who develop jaundice or marked elevations of hepatic enzymes should discontinue the ACE inhibitor and receive appropriate medical treatment.

6 ADVERSE REACTIONS

6.1 Clinical Trials Experience

Because clinical trials are conducted under widely varying conditions, adverse reaction rates observed in the clinical studies of a drug cannot be directly compared to rates in the clinical studies of another drug and may not reflect the rates observed in practice.

Hypertension

The following adverse reactions (events 2% greater on lisinopril than on placebo) were observed with lisinopril vs placebo: headache (5.7% vs 1.9%), dizziness (5.4% vs 1.9%), cough (3.5% vs 1.0%).

Heart Failure

In controlled studies in patients with heart failure, therapy was discontinued in 8.1% of patients treated with lisinopril for 12 weeks, compared to 7.7% of patients treated with placebo for 12 weeks.

The following adverse reactions (events 2% greater on lisinopril than on placebo) were observed with lisinopril vs placebo: hypotension (4.4% vs 0.6%), chest pain (3.4% vs 1.3%).

In the ATLAS trial [see Clinical Studies (14.2)] in heart failure patients, withdrawals for adverse reactions were similar in the low- and high-dose groups. The following adverse reactions, mostly related to ACE inhibition, were reported more commonly in the high dose group:

Table 1: Dose-related Adverse Drug Reactions: ATLAS trial

	High Dose (n = 1568)	Low Dose (n = 1596)
Dizziness	19%	12%
Hypotension	11%	7%
Creatinine increased	10%	7%
Hyperkalemia	6%	4%
Syncope	7%	5%

Acute Myocardial Infarction

Patients in the GISSI-3 study, treated with lisinopril, had a higher incidence of hypotension (9.0% vs 3.7%) and renal dysfunction (2.4% vs 1.1%) compared with patients not taking lisinopril.

Other clinical adverse reactions occurring in 1% or higher of patients with hypertension or heart failure treated with lisinopril in controlled clinical trials and do not appear in other sections of labeling are listed below:

*Body as a whole:* Fatigue, asthenia, orthostatic effects.

*Digestive:* Pancreatitis, constipation, flatulence, dry mouth, diarrhea.

*Hematologic:* Rare cases of bone marrow depression, hemolytic anemia, leukopenia/neutropenia and thrombocytopenia.

*Endocrine:* Diabetes mellitus, inappropriate antidiuretic hormone secretion.

*Metabolic:* Gout

*Skin:* Urticaria, alopecia, photosensitivity, erythema, flushing, diaphoresis, cutaneous pseudolymphoma, toxic epidermal necrolysis, Stevens-Johnson syndrome, and pruritus.

*Special Senses:* Visual loss, diplopia, blurred vision, tinnitus, photophobia, taste disturbances, olfactory disturbances.

*Urogenital:* Impotence

*Miscellaneous:* A symptom complex has been reported which may include a positive ANA, an elevated erythrocyte sedimentation rate, arthralgia/arthritis, myalgia, fever, vasculitis, eosinophilia, leukocytosis, paresthesia and vertigo. Rash, photosensitivity or other dermatological manifestations may occur alone or in combination with these symptoms.

Clinical Laboratory Test Findings

*Serum Potassium:* In clinical trials hyperkalemia (serum potassium > 5.7 mEq/L) occurred in 2.2% and 4.8% of lisinopril-treated patients with hypertension and heart failure, respectively [see Warnings and Precautions (5.5)].

*Creatinine, Blood Urea Nitrogen:* Minor increases in blood urea nitrogen and serum creatinine, reversible upon discontinuation of therapy, were observed in about 2% of patients with hypertension treated with lisinopril alone. Increases were more common in patients receiving concomitant diuretics and in patients with renal artery stenosis [see Warnings and Precautions (5.4)]. Reversible minor increases in blood urea nitrogen and serum creatinine were observed in 11.6% of patients with heart failure on concomitant diuretic therapy. Frequently, these abnormalities resolved when the dosage of the diuretic was decreased.

Patients with acute myocardial infarction in the GISSI-3 trial treated with lisinopril had a higher (2.4% versus 1.1% in placebo) incidence of renal dysfunction in-hospital and at 6 weeks (increasing creatinine concentration to over 3 mg/dL or a doubling or more of the baseline serum creatinine concentration).

*Hemoglobin and Hematocrit:* Small decreases in hemoglobin (mean 0.4 mg/dL) and hematocrit (mean 1.3%) occurred frequently in patients treated with lisinopril but were rarely of clinical importance in patients without some other cause of anemia. In clinical trials, fewer than 0.1% of patients discontinued therapy for anemia.

Liver Enzymes

Rarely, elevations of liver enzymes and/or serum bilirubin have occurred [see Warnings and Precautions (5.6)].

6.2 Postmarketing Experience

The following adverse reactions have been identified during post-approval use of lisinopril that are not included in other sections of labeling. Because these reactions are reported voluntarily from a population of uncertain size, it is not always possible to reliably estimate their frequency or establish a causal relationship to drug exposure.

Other reactions include:

*Metabolism and nutrition disorders*

*Hyponatremia [see Warnings and Precautions (5.4)],* cases of hypoglycemia in diabetic patients on oral antidiabetic agents or insulin [see Drug Interactions (7.2)]

*Nervous system and psychiatric disorders*

Mood alterations (including depressive symptoms), mental confusion

7 DRUG INTERACTIONS

7.1 Diuretics

Initiation of lisinopril in patients on diuretics may result in excessive reduction of blood pressure. The possibility of hypotensive effects with lisinopril can be minimized by either decreasing or discontinuing the diuretic or increasing the salt intake prior to initiation of treatment with lisinopril. If this is not possible, reduce the starting dose of lisinopril [see Dosage and Administration (2.2) and Warnings and Precautions (5.4)].

Lisinopril attenuates potassium loss caused by thiazide-type diuretics. Potassium-sparing diuretics (spironolactone, amiloride, triamterene, and others) or other drugs that may increase serum potassium can increase the risk of hyperkalemia. Therefore, if concomitant use of such agents is indicated, monitor the patient's serum potassium frequently.

7.2 Antidiabetics

Concomitant administration of lisinopril and antidiabetic medicines (insulins, oral hypoglycemic agents) may cause an increased blood-glucose-lowering effect with risk of hypoglycemia.

7.3 Non-Steroidal Anti-Inflammatory Agents Including Selective Cyclooxygenase-2 Inhibitors (COX-2 Inhibitors)

In patients who are elderly, volume-depleted (including those on diuretic therapy), or with compromised renal function, coadministration of NSAIDs, including selective COX-2 inhibitors, with ACE inhibitors, including lisinopril, may result in deterioration of renal function, including possible acute renal failure. These effects are usually reversible. Monitor renal function periodically in patients receiving lisinopril and NSAID therapy.

The antihypertensive effect of ACE inhibitors, including lisinopril, may be attenuated by NSAIDs.

7.4 Dual Blockade of the Renin-Angiotensin System (RAS)

Dual blockade of the RAS with angiotensin receptor blockers, ACE inhibitors, or direct renin inhibitors (such as aliskiren) is associated with increased risks of hypotension, syncope, hyperkalemia, and changes in renal function (including acute renal failure) compared to monotherapy.

The Veterans Affairs Nephropathy in Diabetes (VA NEPHRON-D) trial enrolled 1448 patients with type 2 diabetes, elevated urinary-albumin-to-creatinine ratio, and decreased estimated glomerular filtration rate (GFR 30 to 89.9 mL/min), randomized them to lisinopril or placebo on a background of losartan therapy and followed them for a median of 2.2 years. Patients receiving the combination of losartan and lisinopril did not obtain any additional benefit compared to monotherapy for the combined endpoint of decline in GFR, end stage renal disease, or death, but experienced an increased incidence of hyperkalemia and acute kidney injury compared with the monotherapy group.

In general, avoid combined use of RAS inhibitors. Monitor blood pressure, renal function and electrolytes in patients on lisinopril and other agents that affect the RAS.

Do not coadminister aliskiren with lisinopril in patients with diabetes. Avoid use of aliskiren with lisinopril in patients with renal impairment (GFR < 60 mL/min).

7.5 Lithium

Lithium toxicity has been reported in patients receiving lithium concomitantly with drugs, which cause elimination of sodium, including ACE inhibitors. Lithium toxicity was usually reversible upon discontinuation of lithium and the ACE inhibitor. Monitor serum lithium levels during concurrent use.

7.6 Gold

Nitritoid reactions (symptoms include facial flushing, nausea, vomiting and hypotension) have been reported rarely in patients on therapy with injectable gold (sodium aurothiomalate) and concomitant ACE inhibitor therapy including lisinopril.

7.7 Mammalian Target of Rapamycin (mTOR) Inhibitors

Patients taking concomitant mTOR inhibitor (e.g., temsirolimus, sirolimus, everolimus) therapy may be at increased risk for angioedema [see Warnings and Precautions (5.2)].

### 7.8 Nephrylsin Inhibitors

Patients taking a concomitant nephrylsin inhibitor (e.g., sacubitril) may be at increased risk for angioedema *[see Contraindications (4) and Warnings and Precautions (5.2)]*.

### 8 USE IN SPECIFIC POPULATIONS

#### 8.1 Pregnancy

##### Risk Summary

Lisinopril can cause fetal harm when administered to a pregnant woman. Use of drugs that act on the renin-angiotensin system during the second and third trimesters of pregnancy reduces fetal renal function and increases fetal and neonatal morbidity and death. Most epidemiologic studies examining fetal abnormalities after exposure to antihypertensive use in the first trimester have not distinguished drugs affecting the renin-angiotensin system from other antihypertensive agents. When pregnancy is detected, discontinue lisinopril as soon as possible.

The estimated background risk of major birth defects and miscarriage for the indicated population is unknown. All pregnancies have a background risk of birth defect, loss, or other adverse outcomes. In the U.S. general population, the estimated background risk of major birth defects and miscarriage in clinically recognized pregnancies is 2 to 4% and 15 to 20%, respectively.

##### Clinical Considerations

##### *Disease-associated maternal and/or embryo/fetal risk*

Hypertension in pregnancy increases the maternal risk for pre-eclampsia, gestational diabetes, premature delivery, and delivery complications (e.g., need for cesarean section, and post-partum hemorrhage). Hypertension increases the fetal risk for intrauterine growth restriction and intrauterine death. Pregnant women with hypertension should be carefully monitored and managed accordingly.

##### *Fetal/Neonatal adverse reactions*

Oligohydramnios in pregnant women who use drugs affecting the renin-angiotensin system in the second and third trimesters of pregnancy can result in the following: reduced fetal renal function leading to anuria and renal failure, fetal lung hypoplasia and skeletal deformations, including skull hypoplasia, hypotension, and death. In the unusual case that there is no appropriate alternative therapy to drugs affecting the renin-angiotensin system for a particular patient, apprise the mother of the potential risk to the fetus.

In patients taking lisinopril during pregnancy, perform serial ultrasound examinations to assess the intra-amniotic environment. Fetal testing may be appropriate, based on the week of gestation. If oligohydramnios is observed, discontinue lisinopril, unless it is considered lifesaving for the mother. Patients and physicians should be aware, however, that oligohydramnios may not appear until after the fetus has sustained irreversible injury.

Closely observe infants with histories of in utero exposure to lisinopril for hypotension, oliguria, and hyperkalemia. In neonates with a history of *in utero* exposure to lisinopril, if oliguria or hypotension occurs, support blood pressure and renal perfusion. Exchange transfusions or dialysis may be required as a means of reversing hypotension and/or substituting for disordered renal function.

### 8.2 Lactation

##### Risk Summary

No data are available regarding the presence of lisinopril in human milk or the effects of lisinopril on the breastfed infant or on milk production. Lisinopril is present in rat milk. Because many drugs are secreted in human milk, and because of the potential for serious adverse reactions in the breastfed infants from ACE inhibitors, discontinue breastfeeding or discontinue lisinopril.

### 8.4 Pediatric Use

Antihypertensive effects and safety of lisinopril have been established in pediatric patients aged 6 to 16 years *[see Dosage and Administration (2.1) and Clinical Studies (14.1)]*. No relevant differences between the adverse reaction profile for pediatric patients and adult patients were identified.

Safety and effectiveness of lisinopril have not been established in pediatric patients under the age of 6 or in pediatric patients with glomerular filtration rate < 30 mL/min/1.73 m<sup>2</sup> *[see Clinical Pharmacology (12.3) and Clinical Studies (14.1)]*.

### 8.5 Geriatric Use

No dosage adjustment with lisinopril is necessary in elderly patients. In a clinical study of lisinopril in patients with myocardial infarctions (GISSI-3 Trial) 4,413 (47%) were 65 and over, while 1,650 (18%) were 75 and over. In this study, 4.8% of patients aged 75 years and older discontinued lisinopril treatment because of renal dysfunction vs. 1.3% of patients younger than 75 years. No other differences in safety or effectiveness were observed between elderly and younger patients, but greater sensitivity of some older individuals cannot be ruled out.

### 8.6 Race

ACE inhibitors, including lisinopril, have an effect on blood pressure that is less in Black patients than in non-Blacks.

### 8.7 Renal Impairment

Dose adjustment of lisinopril is required in patients undergoing hemodialysis or whose creatinine clearance is ≤30 mL/min. No dose adjustment of lisinopril is required in patients with creatinine clearance > 30 mL/min *[see Dosage and Administration (2.4) and Clinical Pharmacology (12.3)]*.

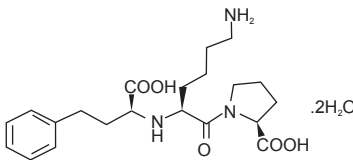
### 10 OVERDOSAGE

Following a single oral dose of 20 g/kg, no lethality occurred in rats and death occurred in one of 20 mice receiving the same dose. The most likely manifestation of overdose would be hypotension, for which the usual treatment would be intravenous infusion of normal saline solution.

Lisinopril can be removed by hemodialysis *[see Warnings and Precautions (5.2)]*.

### 11 DESCRIPTION

Lisinopril is an oral long-acting angiotensin converting enzyme (ACE) inhibitor. Lisinopril, a synthetic peptide derivative, is chemically described as 1-[N<sup>+</sup>-(LS)-1-Carboxy-3-phenylpropyl]-L-lysyl-L-proline dihydrate. Its empirical formula is C<sub>21</sub>H<sub>31</sub>N<sub>3</sub>O<sub>7</sub>·2H<sub>2</sub>O and its structural formula is:



Lisinopril is a white crystalline powder, with a molecular weight of 441.52. It is soluble in water, sparingly soluble in methanol, practically insoluble in alcohol, in acetone, in acetonitrile and in chloroform.

Lisinopril is supplied as 2.5 mg, 5 mg, 10 mg, 20 mg, 30 mg and 40 mg tablets for oral administration.

Inactive Ingredients: Colloidal silicon dioxide, dibasic calcium phosphate dihydrate, magnesium stearate, mannitol and pregelatinized starch (maize).

In addition 5 mg, 10 mg, 20 mg and 30 mg tablets contain ferric oxide red, and 40 mg tablets contain ferric oxide yellow.

### 12 CLINICAL PHARMACOLOGY

#### 12.1 Mechanism of Action

Lisinopril inhibits angiotensin converting enzyme (ACE) in human subjects and animals. ACE is a peptidyl dipeptidase that catalyzes the conversion of angiotensin I to the vasoconstrictor substance, angiotensin II. Angiotensin II also stimulates aldosterone secretion by the adrenal cortex. The beneficial effects of lisinopril in hypertension and heart failure appear to result primarily from suppression of the renin-angiotensin-aldosterone system. Inhibition of ACE results in decreased plasma angiotensin II which leads to decreased vasopressor activity and to decreased aldosterone secretion. The latter decrease may result in a small increase of serum potassium. In hypertensive patients with normal renal function treated with lisinopril alone for up to 24 weeks, the mean increase in serum potassium was approximately 0.1 mEq/L; however, approximately 15% of patients had increases greater than 0.5 mEq/L and approximately 6% had a decrease greater than 0.5 mEq/L. In the same study, patients treated with lisinopril and hydrochlorothiazide for up to 24 weeks had a mean decrease in serum potassium of 0.1 mEq/L; approximately 4% of patients had increases greater than 0.5 mEq/L and approximately 12% had a decrease greater than 0.5 mEq/L *[see Warnings and Precautions (5.5)]*. Removal of angiotensin II negative feedback on renin secretion leads to increased plasma renin activity.

ACE is identical to kininase, an enzyme that degrades bradykinin. Whether increased levels of bradykinin, a potent vasodepressor peptide, play a role in the therapeutic effects of lisinopril remains to be elucidated.

While the mechanism through which lisinopril lowers blood pressure is believed to be primarily suppression of the renin-angiotensin-aldosterone system, lisinopril is antihypertensive even in patients with low-renin hypertension. Although lisinopril was antihypertensive in all races studied, Black hypertensive patients (usually a low-renin hypertensive population) had a smaller average response to monotherapy than non-Black patients.

Concomitant administration of lisinopril and hydrochlorothiazide further reduced blood pressure in Black and non-Black patients and any racial difference in blood pressure response was no longer evident.

#### 12.2 Pharmacodynamics

##### Hypertension

*Adult Patients:* Administration of lisinopril to patients with hypertension results in a reduction of supine and standing blood pressure to about the same extent with no compensatory tachycardia. Symptomatic postural hypotension is usually not observed although it can occur and should be anticipated in volume and/or salt-depleted patients *[see Warnings and Precautions (5.3)]*. When given together with thiazide-type diuretics, the blood pressure lowering effects of the two drugs are approximately additive.

In most patients studied, onset of antihypertensive activity was seen at one hour after oral administration of an individual dose of lisinopril, with peak reduction of blood pressure achieved by 6 hours. Although an antihypertensive effect was observed 24 hours after dosing with recommended single daily doses, the effect was more consistent and the mean effect was considerably larger in some studies with doses of 20 mg or more than with lower doses. However, at all doses studied, the mean antihypertensive effect was substantially smaller 24 hours after dosing than it was 6 hours after dosing.

The antihypertensive effects of lisinopril are maintained during long-term therapy. Abrupt withdrawal of lisinopril has not been associated with a rapid increase in blood pressure or a significant increase in blood pressure compared to pretreatment levels.

#### 12.3 Pharmacokinetics

*Adult Patients:* Following oral administration of lisinopril, peak serum concentrations of lisinopril occur within about 7 hours, although there was a trend to a small delay in time taken to reach peak serum concentrations in acute myocardial infarction patients. Declining serum concentrations exhibit a prolonged terminal phase which does not contribute to drug accumulation. This terminal phase probably represents saturable binding to ACE and is not proportional to dose. Upon multiple dosing, lisinopril exhibits an effective half-life of 12 hours.

Lisinopril does not appear to be bound to other serum proteins. Lisinopril does not undergo metabolism and is excreted unchanged entirely in the urine. Based on urinary recovery, the mean extent of absorption of lisinopril is approximately 25 percent, with large inter-subject variability (6 to 60 percent) at all doses tested (5 to 80 mg). Lisinopril absorption is not influenced by the presence of food in the gastrointestinal tract. The absolute bioavailability of lisinopril is reduced to about 18 percent in patients with stable NYHA Class II-IV congestive heart failure, and the volume of distribution appears to be slightly smaller than that in normal subjects.

The oral bioavailability of lisinopril in patients with acute myocardial infarction is similar to that in healthy volunteers.

Impaired renal function decreases elimination of lisinopril, which is excreted principally through the kidneys, but this decrease becomes clinically important only when the glomerular filtration rate is below 30 mL/min. Above this glomerular filtration rate, the elimination half-life is little changed.

With greater impairment, however, peak and trough lisinopril levels increase, time to peak concentration increases and time to attain steady state is prolonged. Older patients, on average, have (approximately doubled) higher blood levels and area under the plasma concentration time curve (AUC) than younger patients *[see Dosage and Administration (2.1)]*. Lisinopril can be removed by hemodialysis.

Studies in rats indicate that lisinopril crosses the blood-brain barrier poorly. Multiple doses of lisinopril in rats do not result in accumulation in any tissues. Milk of lactating rats contains radioactivity following administration of <sup>14</sup>C lisinopril. By whole body autoradiography, radioactivity was found in the placenta following administration of labeled drug to pregnant rats, but none was found in the fetuses.

*Pediatric Patients:* The pharmacokinetics of lisinopril were studied in 29 pediatric hypertensive patients between 6 years and 16 years with glomerular filtration rate > 30 mL/min/1.73 m<sup>2</sup>. After doses of 0.1 to 0.2 mg/kg, steady state peak plasma concentrations of lisinopril occurred within 6 hours and the extent of absorption based on urinary recovery was about 28%. These values are similar to those obtained previously in adults. The typical value of lisinopril oral clearance (systemic clearance/absolute bioavailability) in a child weighing 30 kg is 10 L/h, which increases in proportion to renal function.

### 13 NONCLINICAL TOXICOLOGY

#### 13.1 Carcinogenesis, Mutagenesis, Impairment of Fertility

There was no evidence of a tumorigenic effect when lisinopril was administered for 105 weeks to male and female rats at doses up to 90 mg per kg per day or for 92 weeks to male and female mice at doses up to 135 mg per kg per day. These doses are 10 times and 7 times, respectively, the MRHDD when compared on a body surface area basis.

Lisinopril was not mutagenic in the Ames microbial mutagen test with or without metabolic activation. It was also negative in a forward mutation assay using Chinese hamster lung cells. Lisinopril did not produce single strand DNA breaks in an *in vitro* alkaline elution rat hepatocyte assay. In addition, lisinopril did not produce increases in chromosomal aberrations in an *in vitro* test in Chinese hamster ovary cells or in an *in vivo* study in mouse bone marrow.

There were no adverse effects on reproductive performance in male and female rats treated with up to 300 mg/kg/day of lisinopril (33 times the MRHDD when compared on a body surface area basis).

Studies in rats indicate that lisinopril crosses the blood brain barrier poorly. Multiple doses of lisinopril in rats do not result in accumulation in any tissues. Milk of lactating rats contains radioactivity following administration of <sup>14</sup>C lisinopril. By whole body autoradiography, radioactivity was found in the placenta following administration of labeled drug to pregnant rats, but none was found in the fetuses.

### 14 CLINICAL STUDIES

#### 14.1 Hypertension

*Adult Patients:* Two dose-response studies utilizing a once daily regimen were conducted in 438 mild to moderate hypertensive patients not on a diuretic. Blood pressure was measured 24 hours after dosing. An antihypertensive effect of lisinopril was seen with 5 mg in some patients. However, in both studies blood pressure reduction occurred sooner and was greater in patients treated with 10, 20, or 80 mg of lisinopril. In controlled clinical studies in patients with mild to moderate hypertension, lisinopril 20 to 80 mg has been compared to hydrochlorothiazide 12.5 to 50 mg and with atenolol 50 to 500 mg, and in patients with moderate, to severe hypertension to metoprolol 100 to 200 mg. It was superior to hydrochlorothiazide in effects on systolic and diastolic blood pressure in a population that was 75% Caucasian. Lisinopril was approximately equivalent to atenolol and metoprolol in effects on diastolic blood pressure and had somewhat greater effects on systolic blood pressure.

Lisinopril had similar effectiveness and adverse effects in younger and older (> 65 years) patients. It was less effective in Blacks than in Caucasians.

In hemodynamic studies of lisinopril in patients with essential hypertension, blood pressure reduction was accompanied by a reduction in peripheral arterial resistance with little or no change in cardiac output and in heart rate. In a study in nine hypertensive patients, following administration of lisinopril, there was an increase in mean renal blood flow that was not significant. Data from several small studies are inconsistent with respect to the effect of lisinopril on glomerular filtration rate in hypertensive patients with normal renal function, but suggest that changes, if any, are not large.

In patients with renovascular hypertension lisinopril has been shown to be well tolerated and effective in reducing blood pressure *[see Warnings and Precautions (5.3)]*.

*Pediatric Patients:* In a clinical study involving 115 hypertensive pediatric patients 6 to 16 years of age, patients who weighed < 50 kg received either 0.625, 2.5, or 20 mg of lisinopril daily and patients who weighed ≥ 50 kg received either 1.25, 5, or 40 mg of lisinopril daily. At the end of 2 weeks, lisinopril administered once daily lowered trough blood pressure in a dose-dependent manner with consistent antihypertensive efficacy demonstrated at doses > 1.25 mg (0.02 mg/kg). This effect was confirmed in a withdrawal phase, where the diastolic pressure rose by about 9 mmHg more in patients randomized to placebo than it did in patients who were randomized to remain on the middle and high doses of lisinopril. The dose-dependent antihypertensive effect of lisinopril was consistent across several demographic subgroups: age, Tanner stage, gender, and race. In this study, lisinopril was generally well-tolerated.

In the above pediatric studies, lisinopril was given either as tablets or in a suspension for those children and infants who were unable to swallow tablets or who required a lower dose than is available in tablet form *[see Dosage and Administration (2.5)]*.

#### 14.2 Heart Failure

In two placebo controlled, 12-week clinical studies compared the addition of lisinopril up to 20 mg daily to digitalis and diuretics alone. The combination of lisinopril, digitalis and diuretics reduced the following signs and symptoms of heart failure: edema, rales, paroxysmal nocturnal dyspnea and jugular venous distention. In one of the studies, the combination of lisinopril, digitalis and diuretics reduced orthopnea, presence of third heart sound and the number of patients classified as NYHA Class III and IV, and it improved exercise tolerance. A large (over 3000 patients) survival study, the ATLAS Trial, comparing 2.5 and 35 mg of lisinopril in patients with systolic heart failure, showed that the higher dose of lisinopril had outcomes at least as favorable as the lower dose. During baseline-controlled clinical trials, in patients receiving digitalis and diuretics, single doses of lisinopril resulted in decreases in pulmonary capillary wedge pressure, systemic vascular resistance and blood pressure accompanied by an increase in cardiac output and no change in heart rate.

#### 14.3 Acute Myocardial Infarction

The Gruppo Italiano per lo Studio della Sopravvivenza nell'Infarto Miocardico (GISSI-3) study was a multicenter, controlled, randomized, unblinded clinical trial conducted in 19,394 patients with acute myocardial infarction (MI) admitted to a coronary care unit. It was designed to examine the effects of short-term (6 week) treatment with lisinopril, nitrates, their combination, or no therapy on short-term (6 week) mortality and on long-term death and markedly impaired cardiac function. Hemodynamically-stable patients presenting within 24 hours of the onset of symptoms were randomized, in a 2 x 2 factorial design, to 6 weeks of either 1) lisinopril alone (n=4841), 2) nitrates alone (n=4869), 3) lisinopril plus nitrates (n=4841), or 4) open control (n=4843). All patients received routine therapies, including thrombolytics (72%), aspirin (84%), and a beta blocker (31%), as appropriate, normally utilized in acute myocardial infarction (MI) patients.

The protocol excluded patients with hypotension (systolic blood pressure ≤100 mmHg), severe heart failure, cardiogenic shock, and renal dysfunction (serum creatinine > 2 mg/dL and/or proteinuria > 500 mg per 24 h). Patients randomized to lisinopril received 5 mg within 24 hours of the onset of symptoms, 5 mg after 24 hours, and then 10 mg daily thereafter. Patients with systolic blood pressure less than 120 mmHg at baseline received 2.5 mg of lisinopril. If hypotension occurred, the lisinopril dose was reduced or if severe hypotension occurred lisinopril was stopped *[see Dosage and Administration (2.3)]*.

The primary outcomes of the trial were the overall mortality at 6 weeks and a combined endpoint at 6 months after the myocardial infarction, consisting of the number of patients who died, had late (day 4) clinical congestive heart failure, or had extensive left ventricular damage defined as ejection fraction ≤35%, or an akinetic-dyskinetic (A-D) score ≥45%. Patients receiving lisinopril (n=9646), alone or with nitrates, had an 11% lower risk of death (p=0.04) compared to patients who did not receive lisinopril (n=9672) (6.4% vs. 7.2%, respectively) at 6 weeks. Although patients randomized to receive lisinopril for up to 6 weeks also fared numerically better on the combined endpoint at 6 months, the open nature of the assessment of heart failure, substantial loss to follow-up echocardiography, and substantial excess use of lisinopril, between 6 weeks and 6 months in the group randomized to 6 weeks of lisinopril, preclude any conclusion about this endpoint.

Patients with acute myocardial infarction, treated with lisinopril, had a higher (9.0% versus 3.7%) incidence of persistent hypotension (systolic blood pressure < 90 mmHg for more than 1 hour) and renal dysfunction (2.4% versus 1.1%) in-hospital and at 6 weeks (increasing creatinine concentration to over 3 mg/dL or a doubling or more of the baseline serum creatinine concentration) *[see Adverse Reactions (6.1)]*.

### 16 HOW SUPPLIED/STORAGE AND HANDLING

Lisinopril Tablets USP 2.5 mg are white colored, round, flat faced beveled edge tablets, debossed with "E 1" on one side and plain on the other side.

Bottles of 100 NDC 31722-172-01

Bottles of 500 NDC 31722-172-05

Lisinopril Tablets USP 5 mg are pink colored, round, flat faced beveled edge tablets, debossed with "E 2" and separated by scored line on one side and plain on the other side.

Bottles of 100 NDC 31722-176-01

Bottles of 1000 NDC 31722-176-10

Lisinopril Tablets USP 10 mg are pink colored, round, flat faced beveled edge tablets, debossed with "E 3" on one side and plain on the other side.

Bottles of 100 NDC 31722-177-01

Bottles of 1000 NDC 31722-177-10

Lisinopril Tablets USP 20 mg are red colored, round, flat faced beveled edge tablets, debossed with "E 4" on one side and plain on the other side.

Bottles of 100 NDC 31722-178-01

Bottles of 1000 NDC 31722-178-10

Lisinopril Tablets USP 30 mg are red colored, round, flat faced beveled edge tablets, debossed with "E 5" on one side and plain on the other side.

Bottles of 100 NDC 31722-179-01

Bottles of 500 NDC 31722-179-05

Lisinopril Tablets USP 40 mg are yellow colored, round, biconvex tablets, debossed with "E 6" on one side and plain on the other side.

Bottles of 100 NDC 31722-180-01

Bottles of 1000 NDC 31722-180-10

Store at 20° to 25°C (68° to 77°F) [see USP Controlled Room Temperature]. Protect from moisture, freezing and excessive heat. Dispense in a tight container.

### 17 PATIENT COUNSELING INFORMATION

NOTE: This information is intended to aid in the safe and effective use of this medication. It is not a disclosure of all possible adverse or intended effects.

*Pregnancy:* Tell female patients of childbearing age about the consequences of exposure to lisinopril during pregnancy. Discuss treatment options with women planning to become pregnant. Tell patients to report pregnancies to their physicians as soon as possible.

*Angioedema:* Angioedema, including laryngeal edema, may occur at any time during treatment with angiotensin converting enzyme inhibitors, including lisinopril. Tell patients to report immediately any signs or symptoms suggesting angioedema (swelling of face, extremities, eyes, lips, tongue, difficulty in swallowing or breathing) and to take no more drug until they have consulted with the prescribing physician.

*Symptomatic Hypotension:* Tell patients to report light-headedness especially during the first few days of therapy. If actual syncope occurs, tell the patient to discontinue the drug until they have consulted with the prescribing physician.

Tell patients that excessive perspiration and dehydration may lead to an excessive fall in blood pressure because of reduction in fluid volume. Other causes of volume depletion such as vomiting or diarrhea may also lead to a fall in blood pressure; advise patients accordingly.

*Hyperkalemia:* Tell patients not to use salt substitutes containing potassium without consulting their physician.

*Hypoglycemia:* Tell diabetic patients treated with oral antidiabetic agents or insulin starting an ACE inhibitor to monitor for hypoglycemia closely, especially during the first month of combined use *[see Drug Interactions (7.2)]*.

*Leukopenia/Neutropenia:* Tell patients to report promptly any indication of infection (e.g., sore throat, fever), which may be a sign of leukopenia/neutropenia.



Manufactured for:  
Camber Pharmaceuticals, Inc.,  
Piscataway, NJ 08854

Manufactured by:  
Evaric Pharmaceuticals Inc.  
Hauppauge, NY 11788

Revised: 05/25

## Job Specification Form - PI

Customer Name : Art #

Customer Rep :

Date Submitted :

---

### Job Info

File Name :

Job Name :

Type :	New Design	Reprint	Manufacture by :
			Manufacture for :
Job Type :	Insert		Proof #
	Med guide		Customer item #
	Patient Guide		Rev #

---

Grain Direction :		Packing type :	Trays	Rubber band
Flat Size :		Flat Tolerance :		
Final Fold Size :		Fold Tolerance :		
Finishing for Padding				
Barcode Reader :		Barcode Type :		
2D Barcode :	Yes	No	2D Barcode Size :	
Paper Stock #			Ink Type :	Water Base
Ink #				UV Base

---

Notes :

---

Approved by : Date :

\* Please review in detail for Layout , Content , Spelling, Spacing, Grammar , Structures, Colors, Barcode and all Specs related to this Artwork.

MedLit Solutions is not responsible for error s on printed product that appear on this proof .



16.0" L

Width: 12.0"  
Length: 16.0"  
Fold: 1.25" x 1.25"

HIGHLIGHTS OF PRESCRIBING INFORMATION

These highlights do not include all the information needed to use LISINAPRIL TABLETS safely and effectively. See full prescribing information for LISINAPRIL TABLETS.

LISINAPRILtablets, for oral use

Initial U.S. Approval: 1987

<b>WARNING: FETAL TOXICITY</b> <i>See full prescribing information for complete boxed warning.</i> <ul style="list-style-type: none"><li>When pregnancy is detected, discontinue lisinopril tablets as soon as possible (5.1).</li><li>Drugs that act directly on the renin-angiotensin system can cause injury and death to the developing fetus (5.1).</li></ul>	
<b>INDICATIONS AND USAGE</b> Lisinopril tablets are an angiotensin converting enzyme (ACE) inhibitor indicated for: <ul style="list-style-type: none"><li>Treatment of hypertension in adults and pediatric patients ≥ 6 years of age (1.1)</li><li>Adjunctive therapy for heart failure (1.2)</li><li>Treatment of acute myocardial infarction (1.3)</li></ul>	
<b>DOSAGE AND ADMINISTRATION</b> <ul style="list-style-type: none"><li>Hypertension: Initiate adults at 10 mg (monotherapy) or 5 mg (on a diuretic) once daily. Titrate up to 40 mg daily based on response. Initial dose in patients 6 years of age and older is 0.07 mg/kg (up to 5 mg total) once daily (2.1)</li><li>Heart Failure: Initiate with 5 mg once daily. Increase dose as tolerated to 40 mg daily (2.2)</li><li>Acute Myocardial Infarction (MI): Give 5 mg within 24 hours of MI followed by 5 mg after 24 hours, then 10 mg once daily (2.3)</li><li>Renal Impairment: For patients with creatinine clearance 10 to 30 mL/min, halve the usual initial dose. For creatinine clearance &lt; 10 mL/min or on hemodialysis, initiate at 2.5 mg (2.4)</li></ul>	
<b>DOSAGE FORMS AND STRENGTHS</b> <ul style="list-style-type: none"><li>Tablets (lisinopril content): 2.5 mg, 5 mg, 10 mg, 20 mg, 30 mg, 40 mg (3)</li></ul>	
<b>CONTRAINDICATIONS</b> <ul style="list-style-type: none"><li>Angioedema or a history of hereditary or idiopathic angioedema (4)</li><li>Hypersensitivity (4)</li><li>Coadministration of aliskiren with lisinopril tablets in patients with diabetes (4, 7.4)</li><li>Lisinopril tablets are contraindicated in combination with a neprilysin inhibitor (e.g., sacubitril). Do not administer lisinopril tablets within 36 hours of switching to or from sacubitril/valsartan, a product containing a neprilysin inhibitor (4)</li></ul>	

FULL PRESCRIBING INFORMATION: CONTENTS \*

WARNING: FETAL TOXICITY

1 INDICATIONS AND USAGE

- 1.1 Hypertension
- 1.2 Heart Failure
- 1.3 Acute Myocardial Infarction

2 DOSAGE AND ADMINISTRATION

- 2.1 Hypertension
- 2.2 Heart Failure
- 2.3 Acute Myocardial Infarction
- 2.4 Dose in Patients with Renal Impairment

3 DOSAGE FORMS AND STRENGTHS

4 CONTRAINDICATIONS

5 WARNINGS AND PRECAUTIONS

- 5.1 Fetal Toxicity
- 5.2 Angioedema and Anaphylactoid Reactions
- 5.3 Impaired Renal Function
- 5.4 Hypotension
- 5.5 Hyperkalemia
- 5.6 Hepatic Failure

6 ADVERSE REACTIONS

- 6.1 Clinical Trials Experience
- 6.2 Postmarketing Experience

7 DRUG INTERACTIONS

- 7.1 Diuretics
- 7.2 Antidiabetics
- 7.3 Non-Steroidal Anti-Inflammatory Agents Including Selective Cyclooxygenase-2 Inhibitors (COX-2 Inhibitors)
- 7.4 Dual Blockade of the Renin-Angiotensin System (RAS)

FULL PRESCRIBING INFORMATION

<b>WARNING: FETAL TOXICITY</b> <b>When pregnancy is detected, discontinue lisinopril tablets as soon as possible [see Warnings and Precautions (5.1)]</b> <b>Drugs that act directly on the renin-angiotensin system can cause injury and death to the developing fetus [see Warnings and Precautions (5.1)]</b>	
--	--

1 INDICATIONS AND USAGE

1.1 Hypertension

Lisinopril tablets are indicated for the treatment of hypertension in adult patients and pediatric patients 6 years of age and older to lower blood pressure. Lowering blood pressure lowers the risk of fatal and non-fatal cardiovascular events, primarily strokes and myocardial infarctions. These benefits have been seen in controlled trials of antihypertensive drugs from a wide variety of pharmacologic classes.

Control of high blood pressure should be part of comprehensive cardiovascular risk management, including, as appropriate, lipid control, diabetes management, antithrombotic therapy, smoking cessation, exercise, and limited sodium intake. Many patients will require more than 1 drug to achieve blood pressure goals. For specific advice on goals and management, see published guidelines, such as those of the National High Blood Pressure Education Program's Joint National Committee on Prevention, Detection, Evaluation, and Treatment of High Blood Pressure (JNC).

Numerous antihypertensive drugs, from a variety of pharmacologic classes and with different mechanisms of action, have been shown in randomized controlled trials to reduce cardiovascular morbidity and mortality, and it can be concluded that it is blood pressure reduction, and not some other pharmacologic property of the drugs, that is largely responsible for those benefits. The largest and most consistent cardiovascular outcome benefit has been a reduction in the risk of stroke, but reductions in myocardial infarction and cardiovascular mortality also have been seen regularly.

Elevated systolic or diastolic pressure causes increased cardiovascular risk, and the absolute risk increase per mmHg is greater at higher blood pressures, so that even modest reductions of severe hypertension can provide substantial benefit. Relative risk reduction from blood pressure reduction is similar across populations with varying absolute risk, so the absolute benefit is greater in patients who are at higher risk independent of their hypertension (for example, patients with diabetes or hyperlipidemia), and such patients would be expected to benefit from more aggressive treatment to a lower blood pressure goal.

Some antihypertensive drugs have smaller blood pressure effects (as monotherapy) in Black patients, and many antihypertensive drugs have additional approved indications and effects (e.g., on angina, heart failure, or diabetic kidney disease). These considerations may guide selection of therapy.

Lisinopril tablets may be administered alone or with other antihypertensive agents [see Clinical Studies (14.1)].

1.2 Heart Failure

Lisinopril tablets are indicated to reduce signs and symptoms of heart failure in patients who are not responding adequately to diuretics and digitalis [see Clinical Studies (14.2)].

1.3 Acute Myocardial Infarction

Lisinopril tablets are indicated for the reduction of mortality in treatment of hemodynamically stable patients within 24 hours of acute myocardial infarction. Patients should receive, as appropriate, the standard recommended treatments such as thrombolytics, aspirin and beta blockers [see Clinical Studies (14.3)].

2 DOSAGE AND ADMINISTRATION

2.1 Hypertension

Initial therapy in adults: The recommended initial dose is 10 mg once a day. Adjust dosage according to blood pressure response. The usual dosage range is 20 to 40 mg per day administered in a single daily dose. Doses up to 80 mg have been used but do not appear to give a greater effect.

Use with Diuretics in Adults

If blood pressure is not controlled with lisinopril tablets alone, a low dose of a diuretic may be added (e.g., hydrochlorothiazide 12.5 mg).

The recommended starting dose in adult patients with hypertension taking diuretics is 5 mg once per day [see Drug Interactions (7.1)].

Pediatric Patients 6 Years of Age and Older with Hypertension

For pediatric patients with glomerular filtration rate > 30 mL/min/1.73 m<sup>2</sup>, the recommended starting dose is 0.07 mg/kg once daily (up to 5 mg total). Dosage should be adjusted according to blood pressure response up to a maximum of 0.61 mg/kg (up to 40 mg) once daily. Doses above 0.61 mg/kg (or in excess of 40 mg) have not been studied in pediatric patients [see Clinical Pharmacology (12.3)].

Lisinopril tablets are not recommended in pediatric patients < 6 years or in pediatric patients with glomerular filtration rate < 30 mL/min/1.73 m<sup>2</sup> [see Use in Specific Populations (8.4) and Clinical Studies (14.1)].

2.2 Heart Failure

The recommended starting dose for lisinopril tablets, when used with diuretics and (usually) digitalis as adjunctive therapy is 5 mg once daily. The recommended starting dose in these patients with hyponatremia (serum sodium < 130 mEq/L) is 2.5 mg once daily. Increase as tolerated to a maximum of 40 mg once daily.

Diuretic dose may need to be adjusted to help minimize hypovolemia, which may contribute to hypotension [see Warnings and Precautions (5.4) and Drug Interactions (7.1)]. The appearance of hypotension after the initial dose of lisinopril tablets does not preclude subsequent careful dose titration with the drug, following effective management of the hypotension.

2.3 Acute Myocardial Infarction

In hemodynamically stable patients within 24 hours of the onset of symptoms of acute myocardial infarction, give lisinopril tablets 5 mg orally, followed by 5 mg after 24 hours, 10 mg after 48 hours and then 10 mg once daily. Dosing should continue for at least 6 weeks.

Initiate therapy with 2.5 mg in patients with a low systolic blood pressure (100 to 120 mmHg) during the first 3 days after the infarct [see Warnings and Precautions (5.4)]. If hypotension occurs (systolic blood pressure ≤ 100 mmHg) consider doses of 2.5 or 5 mg. If prolonged hypotension occurs (systolic blood pressure < 90 mmHg for more than 1 hour) discontinue lisinopril tablets.

2.4 Dose in Patients with Renal Impairment

No dose adjustment of lisinopril tablet is required in patients with creatinine clearance > 30 mL/min. In patients with creatinine clearance 10 to 30 mL/min, reduce the initial dose of lisinopril tablets to half of the usual recommended dose (i.e., hypertension, 5 mg; heart failure or acute MI, 2.5 mg). For patients on hemodialysis or creatinine clearance < 10 mL/min, the recommended initial dose is 2.5 mg once daily [see Use in Specific Populations (8.7) and Clinical Pharmacology (12.3)].

WARNINGS AND PRECAUTIONS

- Angioedema: Discontinue lisinopril tablets (5.2)
- Renal impairment: Monitor renal function periodically (5.3)
- Hypotension: Monitor blood pressure after initiation (5.4)
- Hyperkalemia: Monitor serum potassium periodically (5.5)
- Cholestatic jaundice and hepatic failure: Discontinue lisinopril tablets (5.6)

ADVERSE REACTIONS

Common adverse reactions (events 2% greater than on placebo):

- Hypertension: headache, dizziness and cough (6.1)
- Heart Failure: hypotension and chest pain (6.1)
- Acute Myocardial Infarction: hypotension (6.1)

To report SUSPECTED ADVERSE REACTIONS, contact Camber Pharmaceuticals, Inc. at 1-866-495-1995 or FDA at 1-800-FDA-1088 or [www.fda.gov/medwatch](http://www.fda.gov/medwatch).

DRUG INTERACTIONS

- Diuretics: Excessive drop in blood pressure (7.1)
- NSAIDs: Increased risk of renal impairment and loss of antihypertensive efficacy (7.3)
- Dual inhibition of the renin-angiotensin system: Increased risk of renal impairment, hypotension, syncope, and hyperkalemia (7.4)
- Lithium: Symptoms of lithium toxicity (7.5)
- Gold: Nitritoid reactions (7.6)

USE IN SPECIFIC POPULATIONS

- Pregnancy: Discontinue lisinopril if pregnancy is detected (5.1, 8.1)
- Pediatrics: Safety and effectiveness have not been established in patients < 6 years of age or with glomerular filtration rate < 30 mL/min/1.73 m<sup>2</sup> (8.4)
- Race: Less antihypertensive effect in Blacks than non-Blacks (8.6)

See 17 for PATIENT COUNSELING INFORMATION.

Revised: 05/25

- 7.5 Lithium
- 7.6 Gold
- 7.7 Mammalian Target of Rapamycin (mTOR) Inhibitors
- 7.8 Neprilysin Inhibitors

8 USE IN SPECIFIC POPULATIONS

- 8.1 Pregnancy
- 8.2 Lactation
- 8.4 Pediatric Use
- 8.5 Geriatric Use
- 8.6 Race
- 8.7 Renal Impairment

10 OVERDOSAGE

11 DESCRIPTION

12 CLINICAL PHARMACOLOGY

- 12.1 Mechanism of Action
- 12.2 Pharmacodynamics
- 12.3 Pharmacokinetics

13 NONCLINICAL TOXICOLOGY

- 13.1 Carcinogenesis, Mutagenesis, Impairment of Fertility

14 CLINICAL STUDIES

- 14.1 Hypertension
- 14.2 Heart Failure
- 14.3 Acute Myocardial Infarction

16 HOW SUPPLIED/STORAGE AND HANDLING

17 PATIENT COUNSELING INFORMATION

\*Sections or subsections omitted from the full prescribing information are not listed.

3 DOSAGE FORMS AND STRENGTHS

2.5 mg are white colored, round, flat faced beveled edge tablets, debossed with "E 1" on one side and plain on the other side.

5 mg are pink colored, round, flat faced beveled edge tablets, debossed with "E 2" and separated by scored line on one side and plain on the other side.

10 mg are pink colored, round, flat faced beveled edge tablets, debossed with "E 3" on one side and plain on the other side.

20 mg are red colored, round, flat faced beveled edge tablets, debossed with "E 4" on one side and plain on the other side.

30 mg are red colored, round, flat faced beveled edge tablets, debossed with "E 5" on one side and plain on the other side.

40 mg are yellow colored, round, biconvex tablets, debossed with "E 6" on one side and plain on the other side.

4 CONTRAINDICATIONS

Lisinopril tablets are contraindicated in patients with:

- a history of angioedema or hypersensitivity related to previous treatment with an angiotensin converting enzyme inhibitor
- hereditary or idiopathic angioedema.

Do not coadminister aliskiren with lisinopril tablets in patients with diabetes [see Drug Interactions (7.4)].

Lisinopril tablets are contraindicated in combination with a neprilysin inhibitor (e.g., sacubitril). Do not administer lisinopril tablets within 36 hours of switching to or from sacubitril/valsartan, a product containing a neprilysin inhibitor [see Warnings and Precautions (5.2) and Drug Interactions (7.8)].

5 WARNINGS AND PRECAUTIONS

5.1 Fetal Toxicity

Lisinopril can cause fetal harm when administered to a pregnant woman. Use of drugs that act on the renin-angiotensin system during the second and third trimesters of pregnancy reduces fetal renal function and increases fetal and neonatal morbidity and death. Resulting oligohydramnios can be associated with fetal lung hypoplasia and skeletal deformations. Potential neonatal adverse effects include skull hypoplasia, anuria, hypotension, renal failure, and death. When pregnancy is detected, discontinue lisinopril as soon as possible [see Use in Specific Populations (8.1)].

5.2 Angioedema and Anaphylactoid Reactions

Angioedema

Head and Neck Angioedema:

Angioedema of the face, extremities, lips, tongue, glottis and/or larynx, including some fatal reactions, have occurred in patients treated with angiotensin converting enzyme inhibitors, including lisinopril, at any time during treatment. Patients with involvement of the tongue, glottis or larynx are likely to experience airway obstruction, especially those with a history of airway surgery. Lisinopril should be promptly discontinued and appropriate therapy and monitoring should be provided until complete and sustained resolution of signs and symptoms of angioedema has occurred.

Patients with a history of angioedema unrelated to ACE inhibitor therapy may be at increased risk of angioedema while receiving an ACE inhibitor [see Contraindications (4)]. ACE inhibitors have been associated with a higher rate of angioedema in Black than in non-Black patients.

Patients receiving concomitant ACE inhibitor and mTOR (mammalian target of rapamycin) inhibitor (e.g., temsirolimus, sirolimus, everolimus) therapy may be at increased risk for angioedema [see Drug Interactions (7.7)].

Patients receiving concomitant ACE inhibitor and neprilysin inhibitor therapy may be at increased risk for angioedema [see Contraindications (4) and Drug Interactions (7.8)].

Intestinal Angioedema:

Intestinal angioedema has occurred in patients treated with ACE inhibitors. These patients presented with abdominal pain (with or without nausea or vomiting); in some cases there was no prior history of facial angioedema and C-1 esterase levels were normal. In some cases, the angioedema was diagnosed by procedures including abdominal CT scan or ultrasound, or at surgery, and symptoms resolved after stopping the ACE inhibitor.

Anaphylactoid Reactions

Anaphylactoid Reactions During Desensitization:

Two patients undergoing desensitizing treatment with Hymenoptera venom while receiving ACE inhibitors sustained life-threatening anaphylactoid reactions.

Anaphylactoid Reactions During Dialysis:

Sudden and potentially life-threatening anaphylactoid reactions have occurred in some patients dialyzed with high-flux membranes and treated concomitantly with an ACE inhibitor. In such patients, dialysis must be stopped immediately, and aggressive therapy for anaphylactoid reactions must be initiated. Symptoms have not been relieved by antihistamines in these situations. In these patients, consideration should be given to using a different type of dialysis membrane or a different class of antihypertensive agent. Anaphylactoid reactions have also been reported in patients undergoing low-density lipoprotein apheresis with dextran sulfate absorption.

5.3 Impaired Renal Function

Monitor renal function periodically in patients treated with lisinopril. Changes in renal function including acute renal failure can be caused by drugs that inhibit the renin-angiotensin system. Patients whose renal function may depend in part on the activity of the renin-angiotensin system (e.g., patients with renal artery stenosis, chronic kidney disease, severe congestive heart failure, post-myocardial infarction or volume depletion) may be at particular risk of developing acute renal failure on lisinopril. Consider withholding or discontinuing therapy in patients who develop a clinically significant decrease in renal function on lisinopril [see Adverse Reactions (6.1) and Drug Interactions (7.4)].

5.4 Hypotension

Lisinopril can cause symptomatic hypotension, sometimes complicated by oliguria, progressive azotemia, acute renal failure or death. Patients at risk of excessive hypotension include those with the following conditions or characteristics: heart failure with systolic blood pressure below 100 mmHg, ischemic heart disease, cerebrovascular disease, hyponatremia, high dose diuretic therapy, renal dialysis, or severe volume and/or salt depletion of any etiology.

In these patients, start lisinopril under medical supervision and follow such patients for the first two weeks of treatment and whenever the dose of lisinopril and/or diuretic is increased. Avoid use of lisinopril in patients who are hemodynamically unstable after acute MI.

Symptomatic hypotension is also possible in patients with severe aortic stenosis or hypertrophic cardiomyopathy.

**Surgery/Anesthesia:** In patients undergoing major surgery or during anesthesia with agents that produce hypotension, lisinopril may block angiotensin II formation secondary to compensatory renin release. If hypotension occurs and is considered to be due to this mechanism, it can be corrected by volume expansion.

5.5 Hyperkalemia

Monitor serum potassium periodically in patients receiving lisinopril. Drugs that inhibit the renin-angiotensin system can cause hyperkalemia. Risk factors for the development of hyperkalemia include renal insufficiency, diabetes mellitus, and the concomitant use of potassium-sparing diuretics, potassium supplements, potassium-containing salt substitutes, or other drugs that may increase serum potassium [see Drug Interactions (7.1)].

5.6 Hepatic Failure

ACE inhibitors have been associated with a syndrome that starts with cholestatic jaundice or hepatitis and progresses to fulminant hepatic necrosis and sometimes death. The mechanism of this syndrome is not understood. Patients receiving ACE inhibitors who develop jaundice or marked elevations of hepatic enzymes should discontinue the ACE inhibitor and receive appropriate medical treatment.

6 ADVERSE REACTIONS

6.1 Clinical Trials Experience

Because clinical trials are conducted under widely varying conditions, adverse reaction rates observed in the clinical studies of a drug cannot be directly compared to rates in the clinical studies of another drug and may not reflect the rates observed in practice.

Hypertension

The following adverse reactions (events 2% greater on lisinopril than on placebo) were observed with lisinopril vs placebo: headache (5.7% vs 1.9%), dizziness (5.4% vs 1.9%), cough (3.5% vs 1.0%).

Heart Failure

In controlled studies in patients with heart failure, therapy was discontinued in 8.1% of patients treated with lisinopril for 12 weeks, compared to 7.7% of patients treated with placebo for 12 weeks.

The following adverse reactions (events 2% greater on lisinopril than on placebo) were observed with lisinopril vs placebo: hypotension (4.4% vs 0.6%), chest pain (3.4% vs 1.3%).

In the ATLAS trial [see Clinical Studies (14.2)] in heart failure patients, withdrawals for adverse reactions were similar in the low- and high-dose groups. The following adverse reactions, mostly related to ACE inhibition, were reported more commonly in the high dose group:

Table 1: Dose-related Adverse Drug Reactions: ATLAS trial

	High Dose (n = 1568)	Low Dose (n = 1596)
Dizziness	19%	12%
Hypotension	11%	7%
Creatinine increased	10%	7%
Hyperkalemia	6%	4%
Syncope	7%	5%

Acute Myocardial Infarction

Patients in the GISSI-3 study, treated with lisinopril, had a higher incidence of hypotension (9.0% vs 3.7%) and renal dysfunction (2.4% vs 1.1%) compared with patients not taking lisinopril.

Other clinical adverse reactions occurring in 1% or higher of patients with hypertension or heart failure treated with lisinopril in controlled clinical trials and do not appear in other sections of labeling are listed below:

**Body as a whole:** Fatigue, asthenia, orthostatic effects.

**Digestive:** Pancreatitis, constipation, flatulence, dry mouth, diarrhea.

**Hematologic:** Rare cases of bone marrow depression, hemolytic anemia, leukopenia/neutropenia and thrombocytopenia.

**Endocrine:** Diabetes mellitus, inappropriate antidiuretic hormone secretion.

**Metabolic:** Gout

**Skin:** Urticaria, alopecia, photosensitivity, erythema, flushing, diaphoresis, cutaneous pseudolymphoma, toxic epidermal necrolysis, Stevens-Johnson syndrome, and pruritus.

**Special Senses:** Visual loss, diplopia, blurred vision, tinnitus, photophobia, taste disturbances, olfactory disturbances.

**Urogenital:** Impotence

**Miscellaneous:** A symptom complex has been reported which may include a positive ANA, an elevated erythrocyte sedimentation rate, arthralgia/arthritis, myalgia, fever, vasculitis, eosinophilia, leukocytosis, paresthesia and vertigo. Rash, photosensitivity or other dermatological manifestations may occur alone or in combination with these symptoms.

Clinical Laboratory Test Findings

**Serum Potassium:** In clinical trials hyperkalemia (serum potassium > 5.7 mEq/L) occurred in 2.2% and 4.8% of lisinopril-treated patients with hypertension and heart failure, respectively [see Warnings and Precautions (5.5)].

**Creatinine, Blood Urea Nitrogen:** Minor increases in blood urea nitrogen and serum creatinine, reversible upon discontinuation of therapy, were observed in about 2% of patients with hypertension treated with lisinopril alone. Increases were more common in patients receiving concomitant diuretics and in patients with renal artery stenosis [see Warnings and Precautions (5.4)]. Reversible minor increases in blood urea nitrogen and serum creatinine were observed in 11.6% of patients with heart failure on concomitant diuretic therapy. Frequently, these abnormalities resolved when the dosage of the diuretic was decreased.

Patients with acute myocardial infarction in the GISSI-3 trial treated with lisinopril had a higher (2.4% versus 1.1% in placebo) incidence of renal dysfunction in-hospital and at 6 weeks (increasing creatinine concentration to over 3 mg/dL or a doubling or more of the baseline serum creatinine concentration).

**Hemoglobin and Hematocrit:** Small decreases in hemoglobin (mean 0.4 mg/dL) and hematocrit (mean 1.3%) occurred frequently in patients treated with lisinopril but were rarely of clinical importance in patients without some other cause of anemia. In clinical trials, fewer than 0.1% of patients discontinued therapy for anemia.

Liver Enzymes

Rarely, elevations of liver enzymes and/or serum bilirubin have occurred [see Warnings and Precautions (5.6)].

6.2 Postmarketing Experience

The following adverse reactions have been identified during post-approval use of lisinopril that are not included in other sections of labeling. Because these reactions are reported voluntarily from a population of uncertain size, it is not always possible to reliably estimate their frequency or establish a causal relationship to drug exposure.

Other reactions include:

Metabolism and nutrition disorders

Hyponatremia [see Warnings and Precautions (5.4)], cases of hypoglycemia in diabetic patients on oral antidiabetic agents or insulin [see Drug Interactions (7.2)]

Nervous system and psychiatric disorders

Mood alterations (including depressive symptoms), mental confusion

7 DRUG INTERACTIONS

7.1 Diuretics

Initiation of lisinopril in patients on diuretics may result in excessive reduction of blood pressure. The possibility of hypotensive effects with lisinopril can be minimized by either decreasing or discontinuing the diuretic or increasing the salt intake prior to initiation of treatment with lisinopril. If this is not possible, reduce the starting dose of lisinopril [see Dosage and Administration (2.2) and Warnings and Precautions (5.4)].

Lisinopril attenuates potassium loss caused by thiazide-type diuretics. Potassium-sparing diuretics (spironolactone, amiloride, triamterene, and others) or other drugs that may increase serum potassium can increase the risk of hyperkalemia. Therefore, if concomitant use of such agents is indicated, monitor the patient's serum potassium frequently.

7.2 Antidiabetics

Concomitant administration of lisinopril and antidiabetic medicines (insulins, oral hypoglycemic agents) may cause an increased blood-glucose-lowering effect with risk of hypoglycemia.

7.3 Non-Steroidal Anti-Inflammatory Agents Including Selective Cyclooxygenase-2 Inhibitors (COX-2 Inhibitors)</