



# Droxidopa Capsules

BRAND REFERENCE: Northera®

TE RATING: AB



100 mg

STRENGTH	NDC#	SIZE	COLOR	SHAPE
100 mg	31722-014-90	90ct	Pink Opaque	Capsule



200 mg

STRENGTH	NDC#	SIZE	COLOR	SHAPE
200 mg	31722-015-90	90ct	Light Blue	Capsule



300 mg

STRENGTH	NDC#	SIZE	COLOR	SHAPE
300 mg	31722-010-90	90ct	White	Capsule

Images not to scale

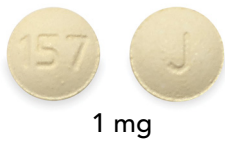
Visit us at [camberpharma.com/products/droxidopa](http://camberpharma.com/products/droxidopa)  
for more information about DROXIDOPA CAPSULES



# Tolterodine Tartrate IR

BRAND REFERENCE: Detrol®

TE RATING: AB



1 mg

STRENGTH	NDC#	SIZE	COLOR	SHAPE
1 mg	31722-805-60	60ct	Pale Yellow	Round



2 mg

STRENGTH	NDC#	SIZE	COLOR	SHAPE
2 mg	31722-806-60	60ct	White	Round

Images not to scale

Visit us at [camberpharma.com/products/tolterodine-tartrate-ir](http://camberpharma.com/products/tolterodine-tartrate-ir)  
for more information about TOLTERODINE TARTRATE IR